

BIOSECURITY BLITZ

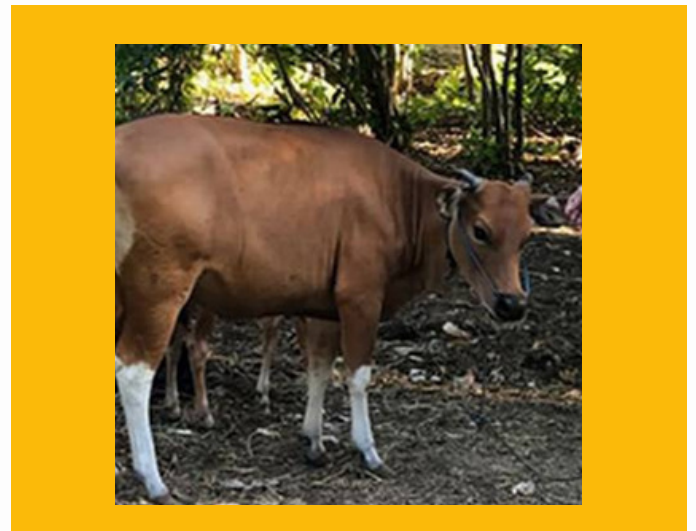
WORKING TOGETHER TO TO PROTECT OUR PORT,
 ENVIRONMENT, AND COMMUNITY

WHAT IS FOOT AND MOUTH DISEASE (FMD)?

FMD is established in many countries, including Malaysia and China. It is considered one of the most serious livestock diseases in the world, affecting cloven-hoofed animals such as cattle, sheep, goats, deer and pigs.

FMD can be spread by animal products, clothing and footwear, and contaminated equipment (such as soil).

FMD is an animal health disease. It has no significant health impacts on humans.



WHY IS THE DISEASE A PROBLEM?

FMD spreads quickly and before infected animals show symptoms.

An outbreak of FMD would have a major impact on susceptible animals, our primary industries and the economy because it reduces agricultural productivity, and it can be very painful for infected animals.

All trade in animal products would be stopped and rural businesses (such as farms, farm contractors, animal processors, and transporters) would be affected.

It would severely impact exports of dairy, red meat and pork products for months or even years after the outbreak, as we would no longer be regarded as FMD-free by trading countries.



WHAT HAPPENS IF IT IS DETECTED ON A FARM HERE?

An FMD outbreak would be a major response, requiring contributions from across government and industry, similar to the COVID-19 pandemic.

We would move quickly to put in place a national livestock standstill to limit its spread and there would be a halt on the export of FMD susceptible animal products.

We would test herds and destroy diseased animals. It would all happen very quickly.

WHAT WOULD THE ECONOMIC IMPACT BE?

The current model estimates it would cost the economy \$16 billion over four to five years. Biosecurity New Zealand is currently updating that modelling.



WHAT IS MPI DOING?

MPI is committed to constantly reassessing its multi-layered biosecurity settings (as has happened in recent weeks) with regard to FMD.

All private importation of meat has been suspended and will be reviewed as the situation changes.

Quarantine officers are checking all cargo containers coming from Indonesia. Previously these could be done at a Transitional Facility (TF) by an Accredited Person (AP) but now require an MPI inspector present.

MPI has an FMD Task Force to coordinate improvements to planning and preparedness for the unlikely event of a disease outbreak. Industry groups are working with MPI on this.

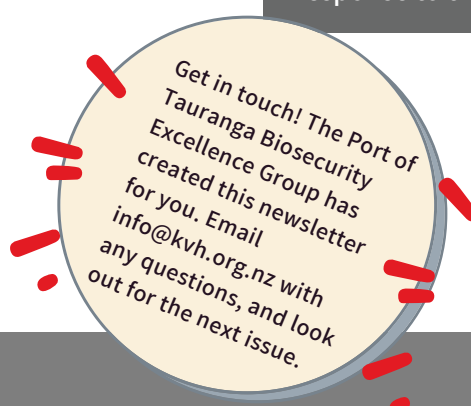
An on-the-ground audit in June of Indonesia's palm kernel supply chain shows Indonesia is meeting New Zealand's strict biosecurity requirements for FMD.

We are reviewing our requirements and processes continually to ensure they are fit for purpose as part of our response to the situation.

WHAT CAN YOU DO?

Be vigilant, especially regarding contamination such as soil.

If you see something on or around an Indonesian container, let MPI know on 07 927 5700.



Get in touch! The Port of Tauranga Excellence Biosecurity Group has created this newsletter for you. Email info@kvh.org.nz with any questions, and look out for the next issue.