



2024/25
CALENDAR

We can all keep unwanted pests
and diseases out of New Zealand

A TAURANGA PORT COMMUNITY COMMITTED TO BIOSECURITY EXCELLENCE



BROWN MARMORATED STINK BUG (BMSB)



Striped antennae

Striped bands on abdomen

If you come across one of these:
CATCH IT! SNAP IT! REPORT IT!

0800 80 99 66

BROWN MARMORATED STINK BUG ORIGINS:

Eastern USA (greatest risk),
Rest of USA, Europe, China,
Korea, Taiwan, Japan, Chile.

I'm larger than NZ shield bugs and around the size of a 10c coin.



I CAN ENTER NZ ON:
High risk months: Sep-Apr



SEPTEMBER 2024

A Tauranga Port Community
Committed to Biosecurity Excellence

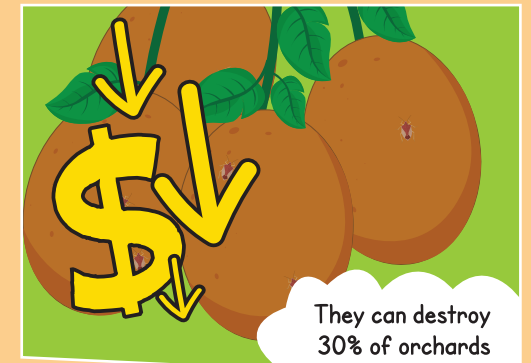
MONDAY	TUESDAY	WEDNESDAY	THURSDAY	FRIDAY	SATURDAY	SUNDAY
26	27	28	29	30	31	1
2	3	4	5	6	7	8
9	10	11	12	13	14	15
16	17	18	19	20	21	22
23	24	25	26	27	28	29
30	1	2	3	4	5	6

Father's Day

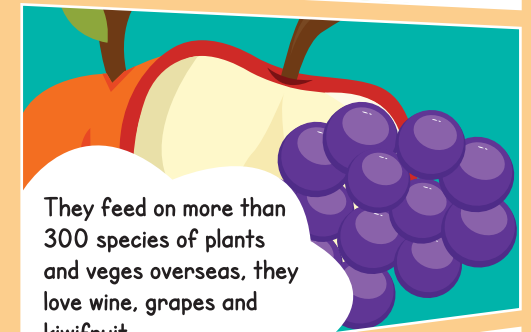
South Canterbury
Anniversary

Term 3 ends

Daylight Saving starts



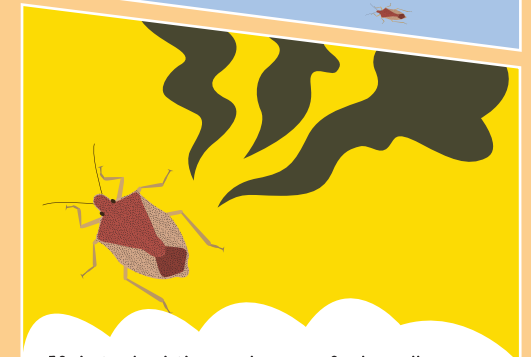
They can destroy
30% of orchards



They feed on more than
300 species of plants
and veges overseas, they
love wine, grapes and
kiwifruit



In winter
thousands of bugs invade
houses for warmth



If disturbed they release a foul smell
(like stinky old socks) which can make your
house hard to live in. No other countries
have managed to get rid of them

We can all keep unwanted pests and diseases out of New Zealand



FRUIT FLIES



Queensland Fruit Fly
6-8mm long

If you come across one of these:
CATCH IT! SNAP IT! REPORT IT!

0800 80 99 66

FRUIT FLY ORIGINS:

Australia, Pacific Islands,
South East Asia, Mediterranean,
South America, Africa, USA.

We are all small
and colourful
flies.



Oriental Fruit Fly
7mm long



Mediterranean Fruit Fly
6mm long



Larvae in fruit
2mm long

I CAN ENTER NZ ON:
High risk months: Sep-May



OCTOBER 2024

A Tauranga Port Community
Committed to Biosecurity Excellence

MONDAY	TUESDAY	WEDNESDAY	THURSDAY	FRIDAY	SATURDAY	SUNDAY
30	1	2	3	4	5	6
7	8	9	10	11	12	13
14	15	16	17	18	19	20
Term 4 starts						
21	22	23	24	25	26	27
			Hawke's Bay Anniversary			
28	29	30	31	1	2	3
Labour Day		Halloween				

We can all keep unwanted pests and diseases out of New Zealand



NORTHERN PACIFIC SEASTAR

If you come across one of these:
CATCH IT! SNAP IT! REPORT IT!

0800 80 99 66

NORTHERN PACIFIC SEASTAR ORIGINS:

Coastal waters of the north-western Pacific Ocean including Japan, Russia, North China and Korea. Tasmania and Victoria, Australia.

FIND ME:

Above water level at low tide, underwater at high tide, sheltered harbours and estuaries, boat hulls, wharves and pontoons.



Five arms

About 24cm across but can be twice as large

Yellow-orange, often with purple markings on top; yellow underneath

Pointy and often upturned tips



I CAN ENTER NZ ON:

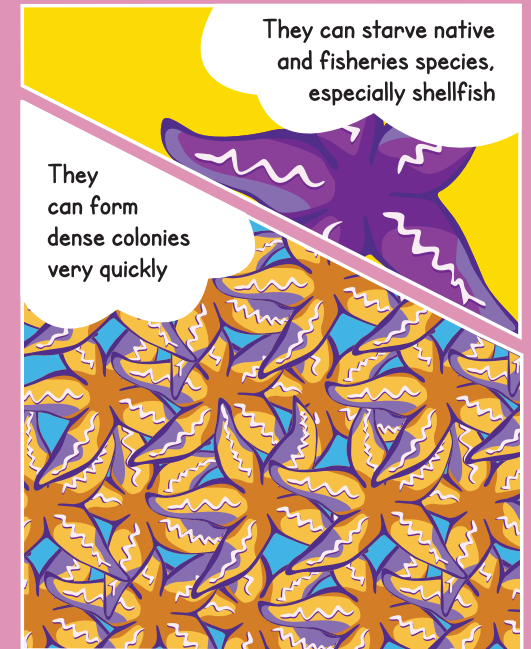
High risk months: All year



NOVEMBER 2024

A Tauranga Port Community
Committed to Biosecurity Excellence

MONDAY	TUESDAY	WEDNESDAY	THURSDAY	FRIDAY	SATURDAY	SUNDAY
28	29	30	31	1	2	3
4	5	6	7	8	9	10
Marlborough Anniversary						
11	12	13	14	15	16	17
				Canterbury Anniversary		
18	19	20	21	22	23	24
25	26	27	28	29	30	1



We can all keep unwanted pests and diseases out of New Zealand

YELLOW SPOTTED STINK BUG



SIZE
Up to
23mm long

Blackish-brown
and covered with
small yellow spots

If you come across one of these:
CATCH IT! SNAP IT! REPORT IT!

0800 80 99 66

YELLOW SPOTTED STINK BUG ORIGINS:

Japan, China, Vietnam
and Taiwan.

I'm larger than NZ
shield bugs and
around the size
of a 10c coin.



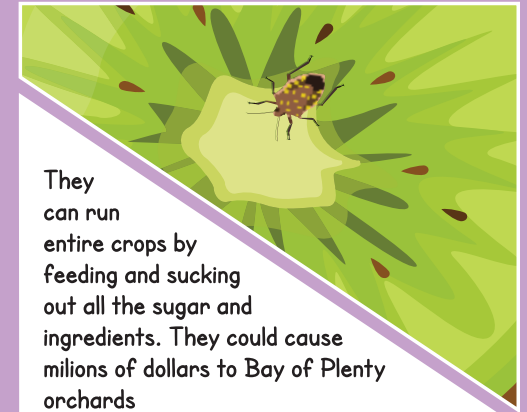
I CAN ENTER NZ ON:
High risk months: Sep-Apr



DECEMBER 2024

A Tauranga Port Community
Committed to Biosecurity Excellence

MONDAY	TUESDAY	WEDNESDAY	THURSDAY	FRIDAY	SATURDAY	SUNDAY
26	27	28	29	30	31	1
2	3	4	5	6	7	8
Westland Anniversary Chatham Islands Anniversary						
9	10	11	12	13	14	15
16	17	18	19	20	21	22
				Term 4 ends		
23	24	25	26	27	28	29
	Christmas Eve	Christmas Day	Boxing Day			
30	31	1	2	3	4	5
New Year's Eve						



They can run entire crops by feeding and sucking out all the sugar and ingredients. They could cause millions of dollars to Bay of Plenty orchards



They get into new countries by hiding in cars being transported, people's luggage, or mail



If they get crushed or are disturbed they let off a horrible smell



Come on guys, get in their way and all over their food

We can all keep unwanted pests and diseases out of New Zealand



NORTHERN GIANT HORNET

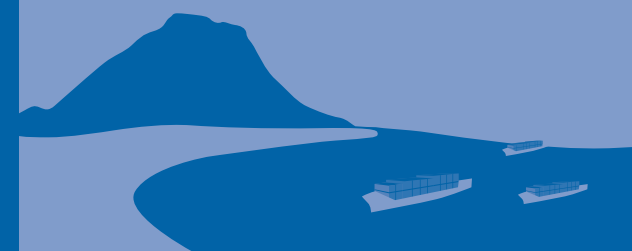
If you come across one of these:
CATCH IT! SNAP IT! REPORT IT!

0800 80 99 66

NORTHERN GIANT HORNET ORIGINS:

Japan, South Korea, Taiwan, China and North America.

I entered New Zealand a few years ago on a cargo ship but haven't established here.



Light orange head

Orange and brown/black striped body

Stinger is just over a centimetre long

0 cm

3.5cm

5 cm

Queens can be bigger than 5 cm

I CAN ENTER NZ ON:

High risk months: Dec-Mar



JANUARY 2025

A Tauranga Port Community
Committed to Biosecurity Excellence

MONDAY	TUESDAY	WEDNESDAY	THURSDAY	FRIDAY	SATURDAY	SUNDAY
30	31	1 New Year's Day	2 Day after New Year's Day	3	4	5
6	7	8	9	10	11	12
13	14	15	16	17	18	19
20	21	22	23	24	25	26
Wellington Anniversary	27	28	29	30	31	1
Auckland Anniversary Term 1 starts 27 Jan earliest & 7 Feb latest	2					



A small group can kill a honeybee hive in just a few hours



We need bees because they pollinate to make about a third of our food



Multiple stings can be very harmful

We can all keep unwanted pests and diseases out of New Zealand



ASIAN PADDLE CRAB



Six prominent spines on each side of the hard upper shell

Hard upper shell up to 12cm wide

1 A few years ago two were caught in the Tauranga Harbour near the Matapihi rail bridge - there's now a trapping programme to monitor for them.

If you come across one of these:
CATCH IT! SNAP IT! REPORT IT!

0800 80 99 66

ASIAN PADDLE CRAB ORIGINS:

Auckland, Northland.

FIND ME:

Low tide, sand and mud, estuaries, harbours and coastal habitats.



I CAN ENTER NZ ON:

High risk months: All year



FEBRUARY 2025

A Tauranga Port Community
Committed to Biosecurity Excellence

MONDAY	TUESDAY	WEDNESDAY	THURSDAY	FRIDAY	SATURDAY	SUNDAY
27	28	29	30	31	1	2
3	4	5	6	7	8	9
Nelson Anniversary			Waitangi Day			
10	11	12	13	14	15	16
				Valentine's Day		
17	18	19	20	21	22	23
24	25	26	27	28	1	2



Asian
paddle crabs
take space and food from
the native crabs and eat-up
all the tuatua and pipis



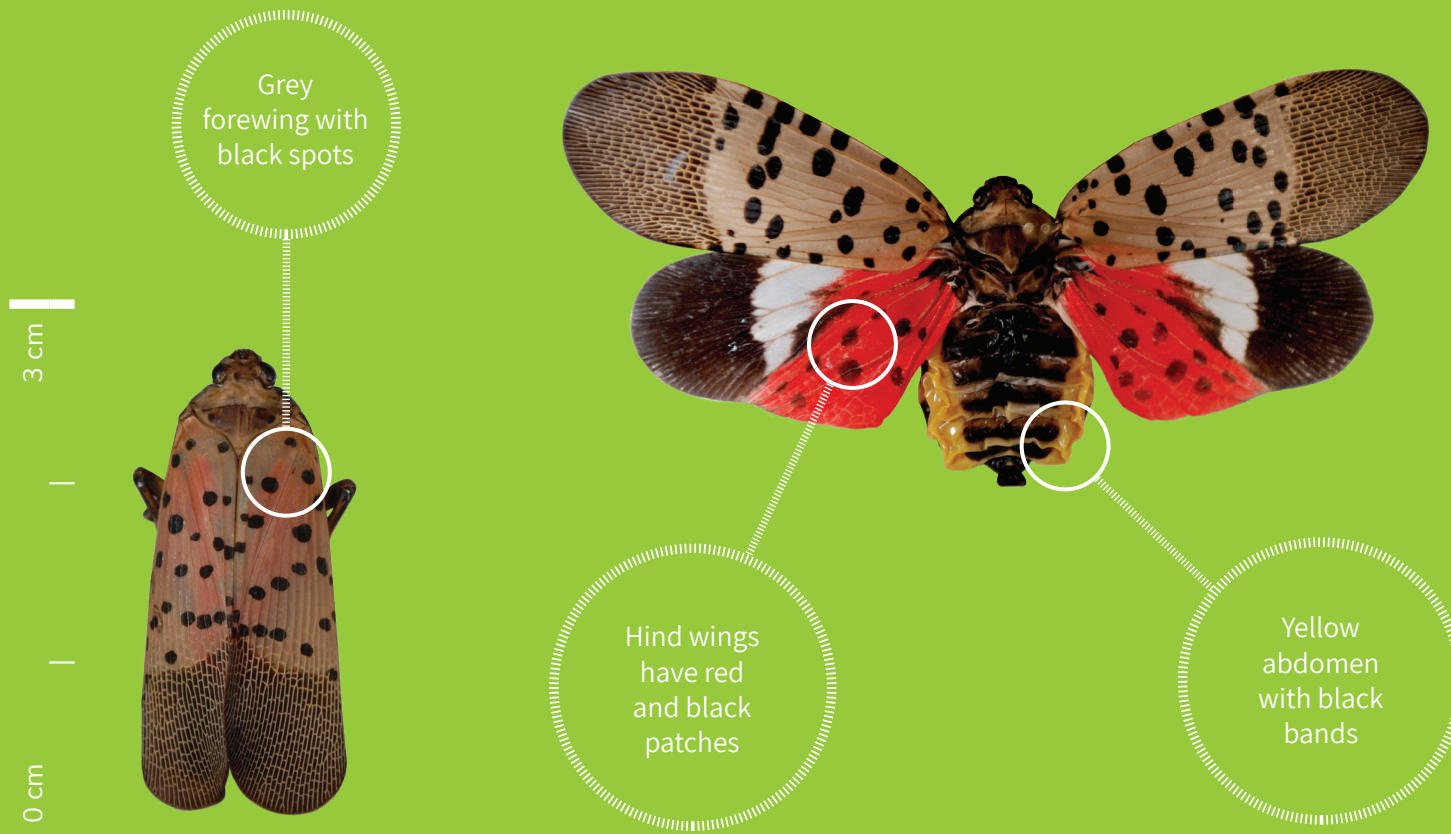
If you're in the water
with them, watch out!
They are vicious!



We can all keep unwanted pests and diseases out of New Zealand



SPOTTED LANTERNFLY



If you come across one of these:
CATCH IT! SNAP IT! REPORT IT!

0800 80 99 66

SPOTTED LANTERNFLY ORIGINS:

China, Korea, India, Vietnam and USA.

As an adult I can get up to 2.5cm long and 1.2cm wide.



I CAN ENTER NZ ON:
High risk months: Sep-May

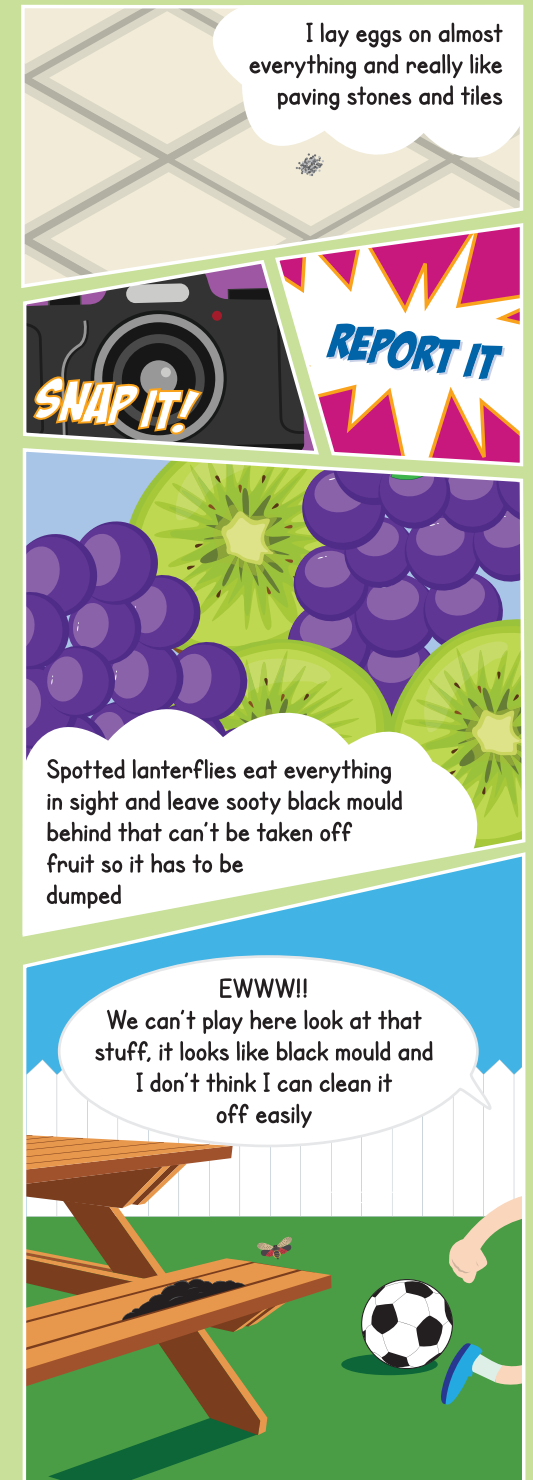


MARCH 2025

A Tauranga Port Community
Committed to Biosecurity Excellence

MONDAY	TUESDAY	WEDNESDAY	THURSDAY	FRIDAY	SATURDAY	SUNDAY
24	25	26	27	28	1	2
3	4	5	6	7	8	9
					International Women's Day	
10	11	12	13	14	15	16
Taranaki Anniversary						
17	18	19	20	21	22	23
St Patrick's Day						
24	25	26	27	28	29	30
Otago Anniversary						
31	1	2	3	4	5	6

We can all keep unwanted pests and diseases out of New Zealand



EXOTIC CAULERPA SEaweEDS



Invasive and forms vast, dense beds that smother everything - including kaimoana sources

Can grow from a small fragment and spread rapidly in just a few weeks



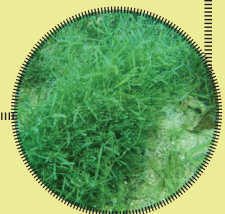
If you come across one of these:
CATCH IT! SNAP IT! REPORT IT!

0800 80 99 66

EXOTIC CAULERPA SEaweEDS ORIGINS:

Seven locations around the upper North Island - in the Hauraki Gulf, Northland, and Coromandel.

My fronds or leaves can get up to 10cm long.



I CAN ENTER NZ ON:

High risk months: All year



APRIL 2025

A Tauranga Port Community
Committed to Biosecurity Excellence

MONDAY	TUESDAY	WEDNESDAY	THURSDAY	FRIDAY	SATURDAY	SUNDAY
31	1	2	3	4	5	6
	April Fools' Day					Daylight Saving ends
7	8	9	10	11	12	13
				Term 1 ends		
14	15	16	17	18	19	20
				Good Friday		Easter Sunday
21	22	23	24	25	26	27
Easter Monday	Southland Anniversary			ANZAC Day		
28	29	30	1	2	3	4
Term 2 starts						

Find me growing below the tideline - between 2 and 30m

I take over everything! I especially love cockles, stopping you having seafood

Eventually I form dense carpets - really annoying if you're trying to dive and enjoy the water

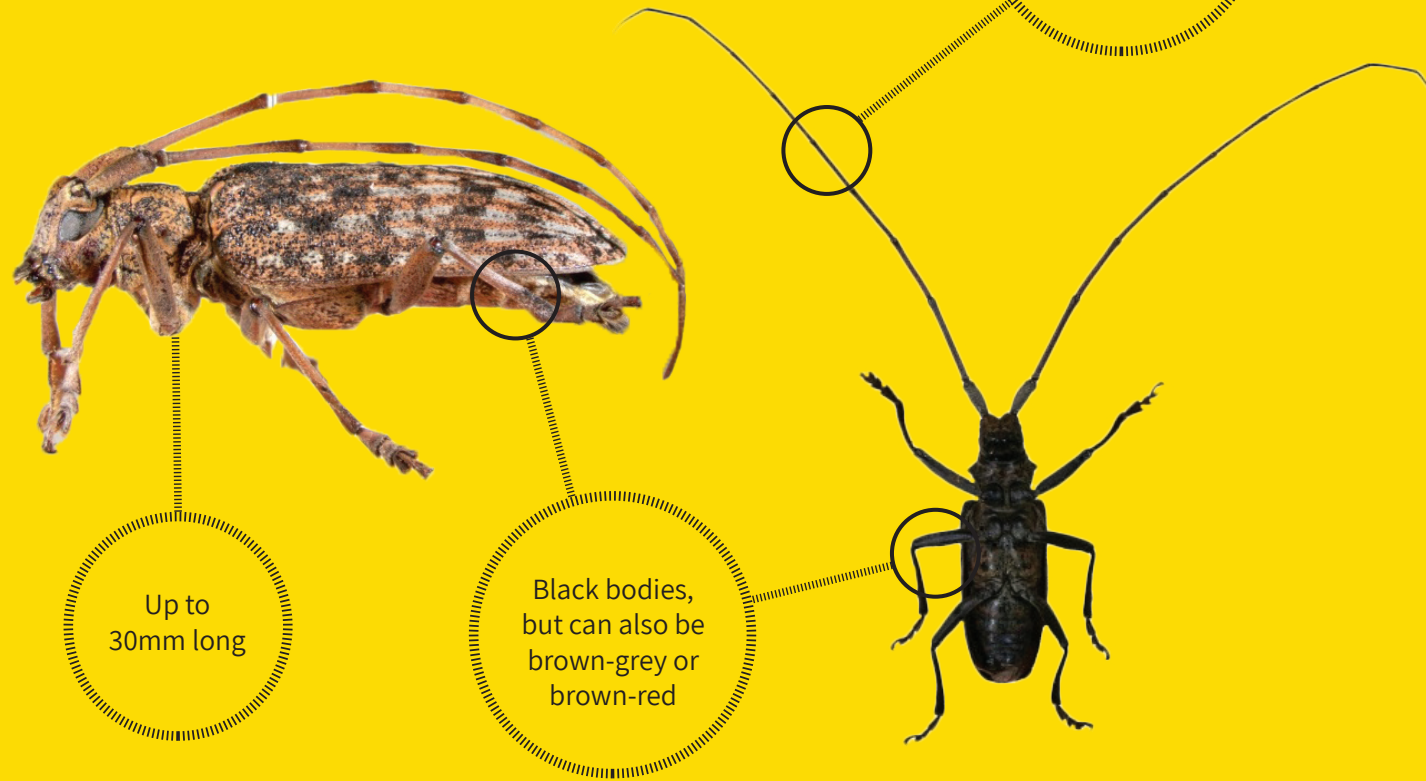
Check anchors and chains, and fishing and diving gear. If you see weed, chuck it straight back but if I'm somewhere new leave me and report me

REPORT IT

We can all keep unwanted pests and diseases out of New Zealand



JAPANESE SAWYER BEETLE



If you come across one of these:
CATCH IT! SNAP IT! REPORT IT!

0800 80 99 66

JAPANESE SAWYER BEETLE ORIGINS:

Japan, China, Taiwan, Korea, Laos and Vietnam.

Harmful tiny worm-like creatures called nematodes live inside the beetle and so can piggyback from tree to tree, causing huge damage and sometimes destroying entire pine forests.

I CAN ENTER NZ ON:

High risk months: All year

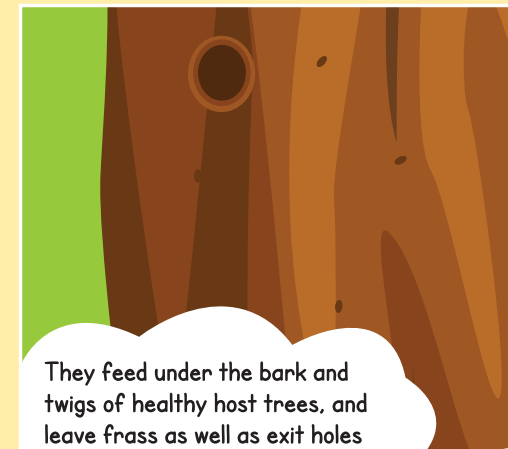


MAY 2025

A Tauranga Port Community
Committed to Biosecurity Excellence

MONDAY	TUESDAY	WEDNESDAY	THURSDAY	FRIDAY	SATURDAY	SUNDAY
28	29	30	1	2	3	4
5	6	7	8	9	10	11
12	13	14	15	16	17	18 Mother's Day
19	20	21	22	23	24	25
26	27	28	29	30	31	1

We can all keep unwanted pests and diseases out of New Zealand



They feed under the bark and twigs of healthy host trees, and leave frass as well as exit holes up to about 10mm wide



They can destroy entire pine forests - very important to us in NZ



They are most likely to sneak in to NZ in wood and wood packaging. Already damaged timber might have sawdust-like frass and larvae exit holes

INVASIVE ANTS



Red Imported
Fire Ant
3-6mm long

Reddish-brown
in colour

Shiny abdomen



Yellow Crazy Ant
4-5mm long



Carpenter Ant
Up to 13mm long

If you come across one of these:
CATCH IT! SNAP IT! REPORT IT!

0800 80 99 66

INVASIVE ANTS' ORIGINS:

Australia, North America
and South America.

Lookout for any
unusual looking
ants.



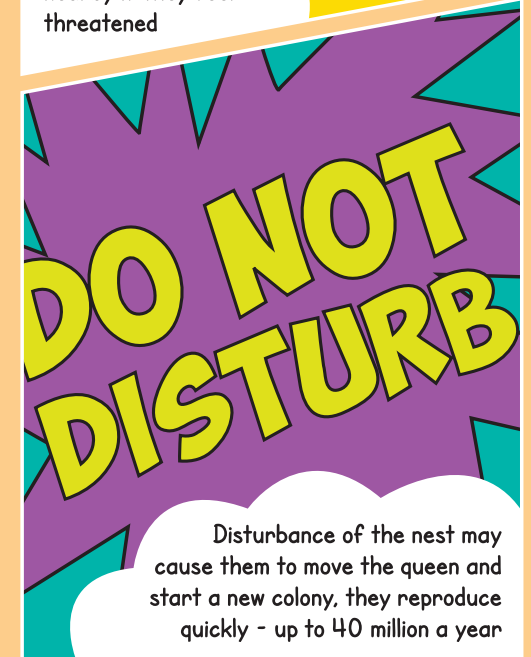
I CAN ENTER NZ ON:
High risk months: All year



JUNE 2025

A Tauranga Port Community
Committed to Biosecurity Excellence

MONDAY	TUESDAY	WEDNESDAY	THURSDAY	FRIDAY	SATURDAY	SUNDAY
26	27	28	29	30	31	1
2	3	4	5	6	7	8
King's Birthday						
9	10	11	12	13	14	15
16	17	18	19	20	21	22
				Matariki		
23	24	25	26	27	28	29
				Term 2 ends		
30	1	2	3	4	5	6



SPONGY MOTH



Egg mass



WING SPAN

90mm female,
30-40mm male



If you come across one of these:
CATCH IT! SNAP IT! REPORT IT!

0800 80 99 66

SPONGY MOTH ORIGINS:

China, Japan, Russia
and South Korea.

Formerly known
as the Asian
Gypsy Moth.



I CAN ENTER NZ ON:
High risk months: Jul-Sep



JULY 2025

A Tauranga Port Community
Committed to Biosecurity Excellence

MONDAY	TUESDAY	WEDNESDAY	THURSDAY	FRIDAY	SATURDAY	SUNDAY
30	1	2	3	4	5	6
7	8	9	10	11	12	13
16	15	16	17	18	19	20
Term 3 starts						
21	22	23	24	25	26	27
28	29	30	31	1	2	3



They lay hundreds of eggs in a single mass which then release hungry caterpillars



Once the eggs hatch they can strip entire trees of its leaves



They have tiny stinging hairs that cause an itchy or painful rash



REPORT IT

We can all keep unwanted pests and diseases out of New Zealand



GIANT AFRICAN SNAIL



You will recognise me by my size, I am huge... 10-20cm!

If you come across one of these:
CATCH IT! SNAP IT! REPORT IT!

0800 80 99 66

GIANT AFRICAN SNAIL ORIGINS:

Pacific Islands, South East Asia, China, India, Sri Lanka, Brazil, Caribbean, West Africa, Mauritius, Seychelles, Reunion Island.

I have a life span of 3-5 years but hibernation can add a few.



I CAN ENTER NZ ON:

High risk months: All year



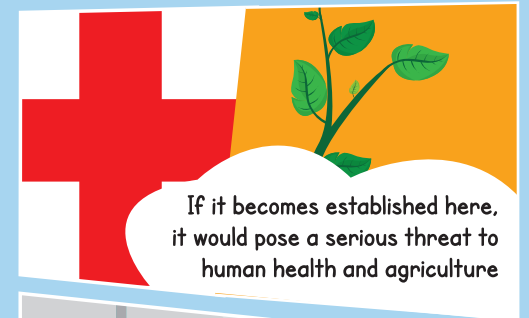
AUGUST 2025

A Tauranga Port Community
Committed to Biosecurity Excellence

MONDAY	TUESDAY	WEDNESDAY	THURSDAY	FRIDAY	SATURDAY	SUNDAY
28	29	30	31	1	2	3
4	5	6	7	8	9	10
11	12	13	14	15	16	17
18	19	20	21	22	23	24
25	26	27	28	29	30	31



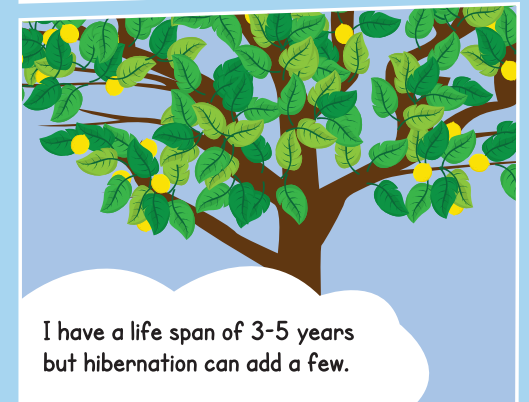
I love wreaking havoc in the forests and crops. I'll eat almost everything - at least 500 different plants and veges make list of favourites



If it becomes established here, it would pose a serious threat to human health and agriculture



I'm such a menace. I've even been seen eating the paint off houses. Yum!



I have a life span of 3-5 years but hibernation can add a few.

We can all keep unwanted pests and diseases out of New Zealand



BIOSECURITY EXCELLENCE AT PORT OF TAURANGA

Everyone who works in and around the Port plays a part in keeping unwanted pests and diseases out of New Zealand.

Pests and diseases from offshore can cause serious harm to New Zealand's unique environment and primary industries; and the Port of Tauranga is one of many ways in which they can enter.

That's why the Port of Tauranga is working with other key organisations to pursue 'biosecurity excellence at the Port' – an award winning initiative to lift biosecurity protection at the Port and its transitional facilities through a partnership approach between Port staff, associated industries and government.

This partnership explores opportunities to innovate and strengthen the current screening and inspection programmes at the Port of Tauranga and progresses initiatives to reduce biosecurity risks.

This calendar features 12 of our most unwanted pests that could potentially enter through the Port of Tauranga. Our best chance at keeping them out includes surveillance among people who know what to look for and can identify and report these pests, should they arrive.

Transitional facilities and associated industries such as transporters and other logistical organisations can provide vital assistance with this surveillance.

By working together, we can help protect New Zealand's environment and primary industries from unwanted biosecurity risks.



If you come across any of those of these pests featured in this calendar:

CATCH IT! SNAP IT! REPORT IT! 0800 80 99 66