

FACT SHEET



Fruit flies

Three species of fruit fly have been identified as the most serious threat to the kiwifruit industry - the Oriental Fruit Fly (*Bactrocera dorsalis*), Mediterranean Fruit Fly (*Ceratitis capitata*) and the Queensland Fruit Fly, or QFF (*Bactrocera tryoni*).

Each of these species has a well demonstrated ability to cause serious production impacts to a wide range of horticultural species when established. Incursions of breeding populations can result in significant market access implications for kiwifruit exports, especially the QFF as this has a very limited distribution and is likely to result in access implications across nearly all major markets.

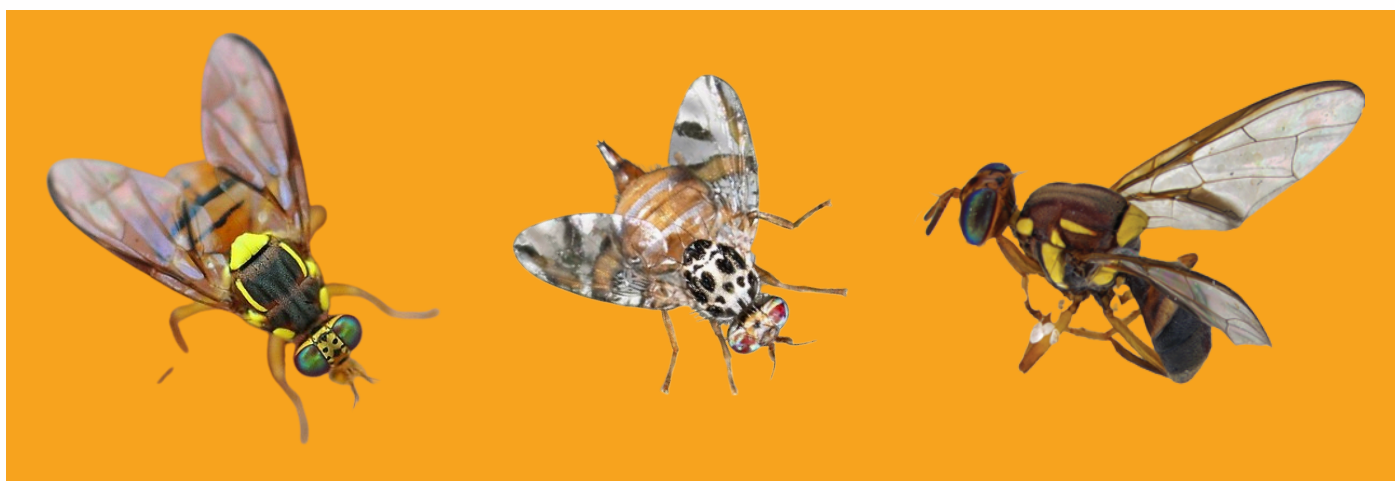
Identification

Not to be confused with vinegar flies found around decaying fruit, these fruit flies are a similar size to a common house fly.

The Oriental Fruit Fly is around 8mm, the Mediterranean Fruit Fly up to 6mm, and the QFF up to between 6-8mm. These flies have distinct colouring as seen in the images below, left to right.

While fruit flies can impact kiwifruit production, it is the access restrictions that markets impose that result in the greatest economic impact.

Horticulture Innovation Australia estimates the annual cost of control measures, lost exports and contaminated produce related to the QFF, to be at least A\$150m. Should a breeding population establish in Te Puke economic impacts are estimated to be \$198-\$690million.



REPORT THE UNUSUAL
KVH 0800 665 825
BIOSECURITY NEW ZEALAND
0800 80 99 66



CATCH IT



SNAP IT

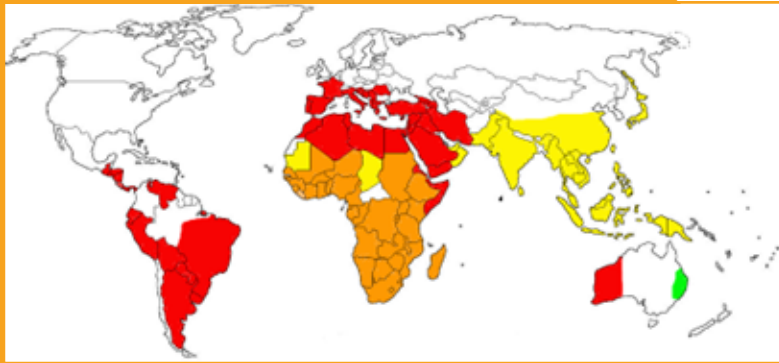


REPORT IT

FACT SHEET



Distribution and climate range



- Oriental
- Mediterranean
- QFF
- Mediterranean and Oriental

New Zealand is fortunate to have country freedom for all three of these flies. Many other countries have at least one present as shown in the map above. QFF has the most limited distribution of these species and therefore can result in the greatest market access implications.

Surveillance

New Zealand has a fruit fly surveillance programme that has been operating for almost 20 years and involves over 7,500 traps nationwide.

REPORT THE UNUSUAL
KVH 0800 665 825
BIOSECURITY NEW ZEALAND
0800 80 99 66



CATCH IT



SNAP IT



REPORT IT