

# Fact sheet: Spotted Wing Drosophila



Spotted Wing drosophila (SWD), or *Drosophila suzukii*, lay eggs in ripening fruit making it soft and unmarketable. The SWD is a serious threat to fruit crops in every country it has established in, resulting in major economic costs due to control, crop destruction and market access implications. Impacts to kiwifruit are expected to be limited and softer varieties would be more susceptible. Kiwiberry is a host to this pest.

## Identification

SWD are small yellowish-brown flies with red eyes, 2-3mm in length.

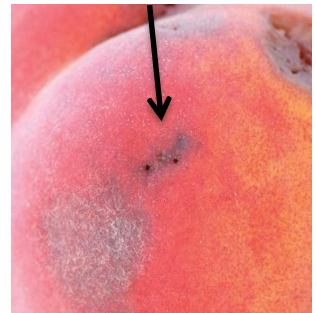
The most distinguishable trait is that adult males have a black spot towards the tip of each wing (*image, left side*). Larvae are milky white, cylindrical with black mouth parts and between 1-6mm in length (*image, right side*).



## Signs and symptoms

Although most vinegar flies attack damaged or rotting fruit, SWD attack ripening fruit making them a much more serious pest.

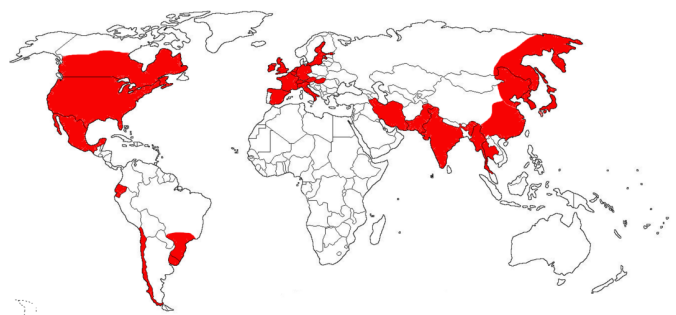
SWD have a wide range of hosts, including kiwiberry. Larvae inflict damage by feeding on the pulp inside fruit. Infested fruit begins to collapse around the feeding site, causing a visible blemish on the fruit. Holes the size of pin pricks (*image, right*) from egg laying are evident in the soft area of the fruit. Secondary infections result in rotting. Before larval feeding the presence of eggs is difficult to detect and may result in inadvertent spread.



## Distribution and climate range

SWD is native to Southeast Asia and is undergoing a rapid range expansion in North America and Europe. It has also established in Chile.

Adults are active above 10°C and thrive in temperatures up to 25°C making New Zealand a suitable climate for this organism.



## Surveillance

SWD is a mobile pest which can fly within a local area, however long-distance spread is likely to be by the movement of infested fruit. Traps can be used for surveillance monitoring and if an eradication programme is required, sprays can be used in combination with destroying ripe fruit hosts.

**What should you do if you think you have seen this pest?**

**Phone MPI on 0800 80 99 66 or KVH on 0800 665 825**