

Kiwifruit *Phytophthora* survey

What is the survey?

Plant & Food Research, Kiwifruit Vine Health (KVH), and Zespri are working together on a survey of *Phytophthora* pathogens in kiwifruit orchards throughout New Zealand.

Our aim is to support New Zealand's kiwifruit biosecurity by better understanding our current baseline of *Phytophthora* species associated with kiwifruit. This helps focus our preparedness efforts on the threats we don't have, enables us to respond appropriately to new detections, and avoids over reaction to species that have been here a long time undetected.



How to get involved

If you have any vines with known or suspected *Phytophthora* symptoms - similar to the images to the right - we encourage you to be involved in this survey.

We will test soil, root, and leaf material from kiwifruit orchards across the country in autumn and spring over two years (2021/22). Each orchard will be visited once during this time.

Please confirm your participation with Linda Peacock from KVH by email at linda.peacock@kvh.org.nz. We will confirm with you the extra information we need – such as contact details, vine and orchard information, and Health & Safety (including Covid-19) details. You will then be contacted by Plant & Food Research to arrange sample collection, which will be at least 24 hours before visiting your orchard.

Results from the autumn 2022 sampling round will be documented and provided to orchard managers in September 2022. They will be confidential to yourself, Plant & Food Research, KVH, Zespri and Biosecurity New Zealand.



What we'll do when we visit

Firstly, we assure you we'll leave your orchard as we find it and we'll meet very strict Health & Safety, Covid-19, and biosecurity requirements.

From your orchard we will take about a litre (a small milk bottle) of soil and root material and 10 leaves from four different vines. This is how we'll do it:

- All the equipment we use will be sterilised before we start.
- At four points, around a metre from the base of each vine, we'll dig a small hole about 10-20cm deep and 10-20cm wide.
- We'll collect the soil/root material and then fill in the holes.
- We'll hand pick 10 leaves from each of the four vines.
- Sampled vines will be marked with a plastic tag.

Managing biosecurity risk

Advances in diagnostic technology have increased the likelihood of detecting new species. In such instances, Biosecurity New Zealand would be notified and may investigate.

The most likely scenario is that any such organisms would have been here a long time and are a new discovery rather than a new arrival and therefore they may not be a biosecurity risk.

However, should actions be taken to contain or eradicate the organism in a response, any restrictions would be eligible for compensation under the Biosecurity Act (these must be verifiable losses so good record keeping is essential).

Fruit is not considered a transmission pathway for *Phytophthora* - in the unlikely scenario that restrictions are imposed these are unlikely to restrict any fruit movements.

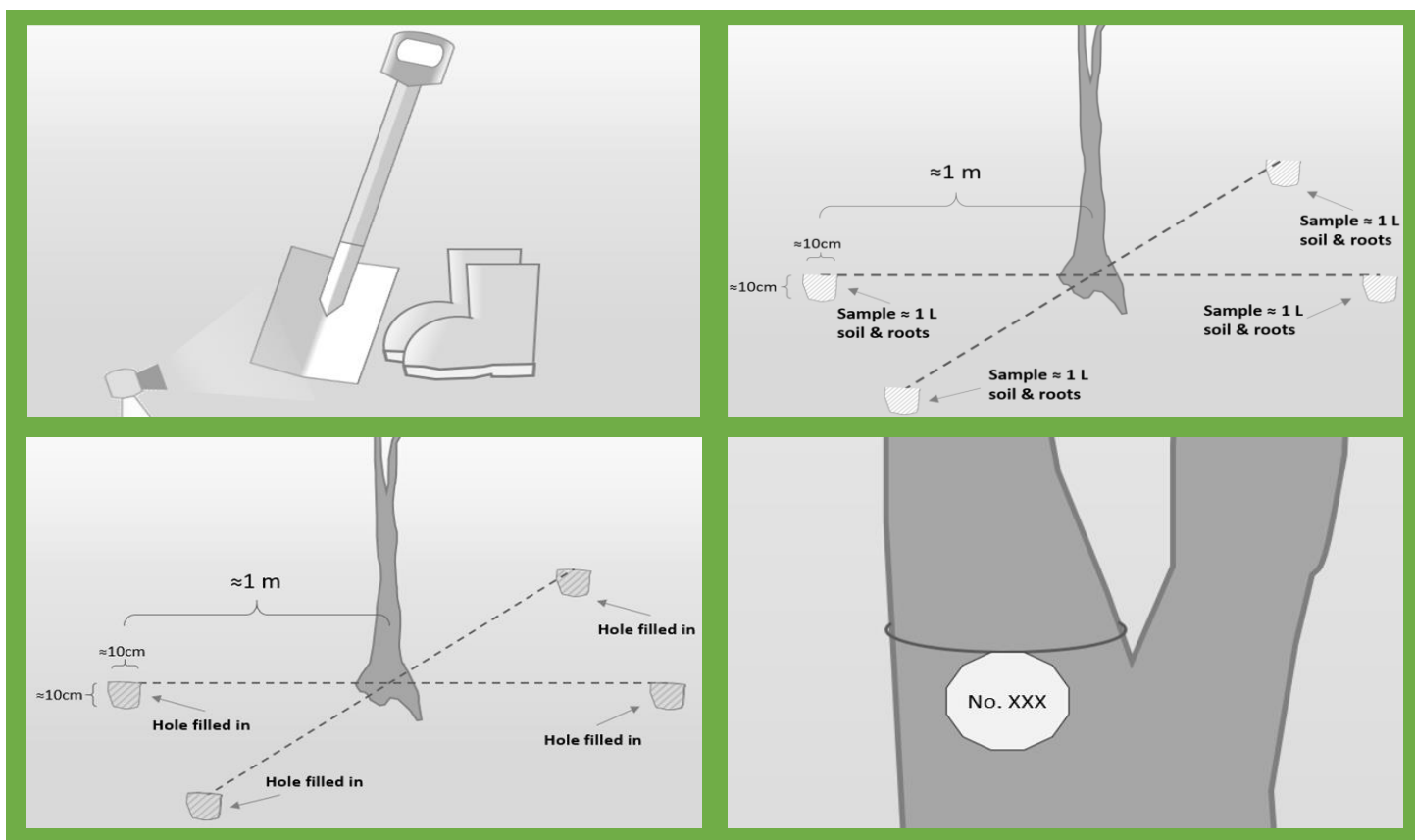


Figure top left: Equipment used to collect soil and plant material will be surface sterilised before use. **Top right:** Approximately one litre of soil and roots will be collected from four points about a metre from the base of sampled vines. **Bottom left:** We will fill and level holes after collection. **Bottom right:** Sampled vines will be tagged with a plastic tag and flagging tape.

Questions?

Feel free to contact Monika Walter from Plant & Food Research (monika.walter@plantandfood.co.nz and 021 302 740) or Linda Peacock from KVH (linda.peacock@kvh.org.nz and 027 475 2909).