

We can all keep unwanted pests and diseases out of New Zealand

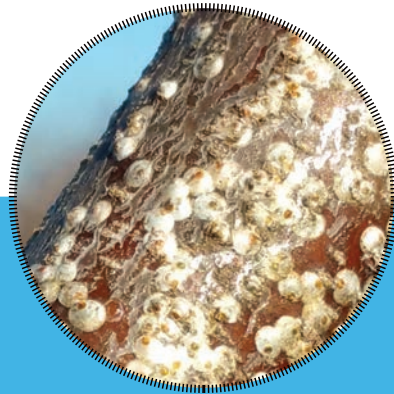
**2025
Calendar**

**A Kiwifruit Growing
Community Committed to
Biosecurity Excellence**

Image: Anne Nielsen, Rutgers University



White Peach Scale

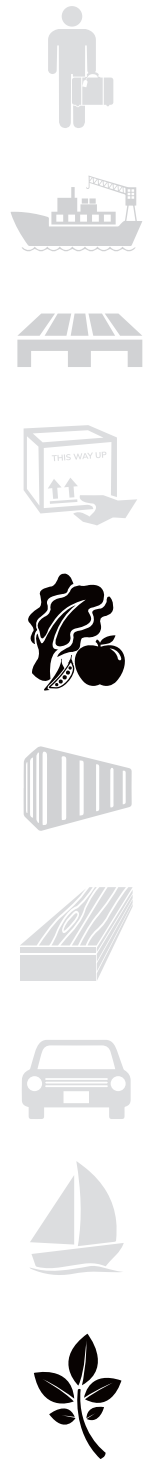


Pink-yellow
in colour

Scale are
pear-shaped
and 2.0 to
2.5mm long



I CAN ENTER
NZ ON:



January / 25

New Zealand's kiwifruit growing community is committed to biosecurity excellence

MONDAY	TUESDAY	WEDNESDAY	THURSDAY	FRIDAY	SATURDAY	SUNDAY
30	31	1 • New Year's Day	2 • Day after New Year's Day	3	4	5
6	7	8	9	10	11	12
13	14	15	16	17	18	19
20 • Wellington Anniversary	21	22	23	24	25	26
27 • Auckland Anniversary • Term 1 starts 27 Jan earliest & 7 Feb latest	28	29	30	31	1	2



Ko TĀTOU
THIS IS US BIOSECURITY 2025



WHITE PEACH SCALE IS DISTRIBUTED
ACROSS THE WORLD



IF YOU COME ACROSS ONE OF THESE:
CATCH IT! SNAP IT! REPORT IT!

0800 665 825

OR CONTACT MPI on: **0800 80 99 66**

Northern Giant Hornet

Entered New Zealand a few years ago on a cargo ship but hasn't established here

- Person with suitcase
- Ship
- Wooden pallet
- Box with 'THIS WAY UP' and arrows
- Worms and fruit
- Shipping container
- Stack of lumber
- Car
- Sailboat
- Leaf

I CAN ENTER NZ ON:

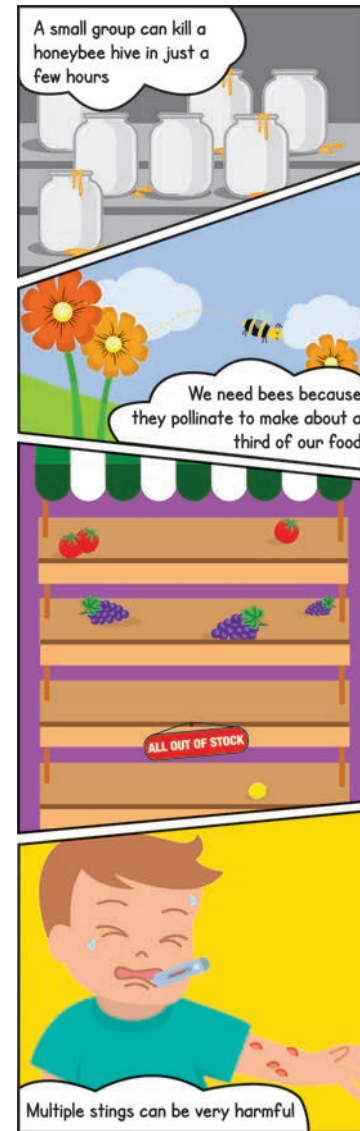


0 cm | | 3.5 cm | 5 cm | Queens can be bigger than 5 cm

February / 25

New Zealand's kiwifruit growing community is committed to biosecurity excellence

MONDAY	TUESDAY	WEDNESDAY	THURSDAY	FRIDAY	SATURDAY	SUNDAY
27	28	29	30	31	1	2
3 • Nelson Anniversary	4	5	6 • Waitangi Day	7	8	9
10	11	12	13	14 • Valentines Day	15	16
17	18	19	20	21	22	23
24	25	26	27	28	1	2



**KO TĀTOU
THIS IS US**
Biosecurity protects what you love



ASIAN GIANT HORNET CAN TRAVEL FROM

- Japan
- Taiwan
- North America
- South Korea
- China



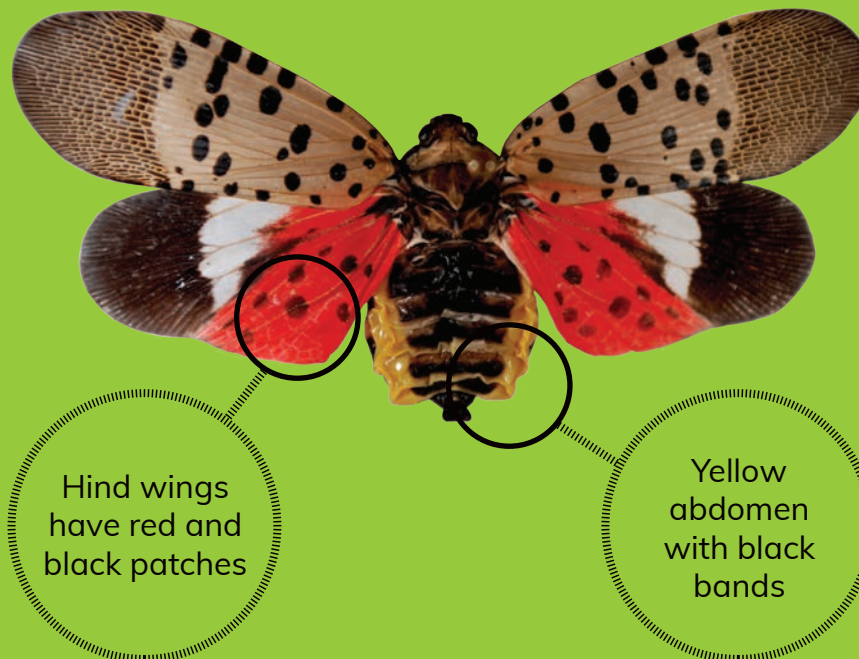
IF YOU COME ACROSS ONE OF THESE:
CATCH IT! SNAP IT! REPORT IT!

0800 665 825

OR CONTACT MPI on: **0800 80 99 66**

Spotted Lanternfly

Adults are up to 2.5cm long
and 1.2cm wide



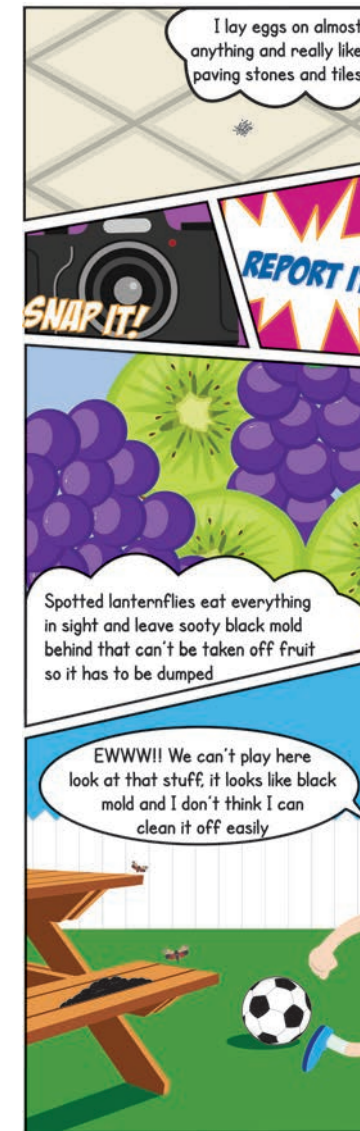
I CAN ENTER
NZ ON:



March / 25

New Zealand's kiwifruit growing community is committed to biosecurity excellence

MONDAY	TUESDAY	WEDNESDAY	THURSDAY	FRIDAY	SATURDAY	SUNDAY
24	25	26	27	28	1	2
3	4	5	6	7	8	9
10	11	12	13	14	15	16
• Taranaki Anniversary						
17	18	19	20	21	22	23
• St Patrick's Day						
24	25	26	27	28	29	30
• Otago Anniversary						
31	1	2	3	4	5	6



**KO TĀTOU
THIS IS US**
Biosecurity protects what you love



LANTERNFLY CAN TRAVEL FROM

- China
- India
- Vietnam
- Korea
- USA



IF YOU COME ACROSS ONE OF THESE:
CATCH IT! SNAP IT! REPORT IT!

0800 665 825

OR CONTACT MPI on: **0800 80 99 66**

Ceratocystis Wilt

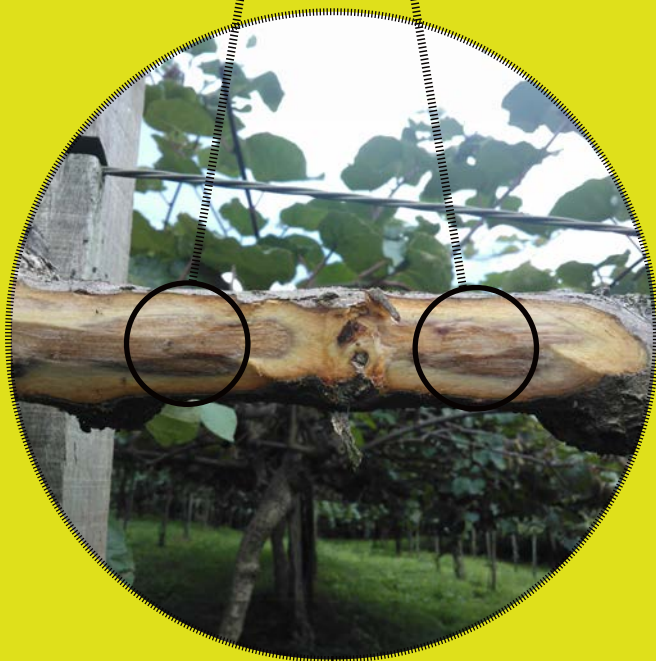
Reports of up to
50% vine loss on
affected kiwifruit
orchards in Brazil

Xylem
browning



Root damage
and browning

When neighbouring
vines on-orchard get
infected via roots,
a circular pattern of
dead vines is seen



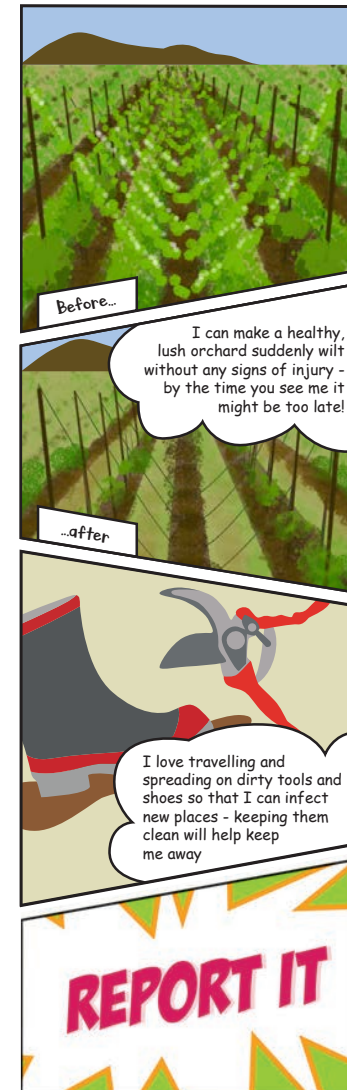
I CAN ENTER
NZ ON:



April / 25

New Zealand's kiwifruit growing community is committed to biosecurity excellence

MONDAY	TUESDAY	WEDNESDAY	THURSDAY	FRIDAY	SATURDAY	SUNDAY
31	1 • April Fool's Day	2	3	4	5	6 • Daylight savings ends
7	8	9	10	11 • Term 1 ends	12	13
14	15	16	17	18 • Good Friday	19	20 • Easter Sunday
21 • Easter Monday	22 • Southland Anniversary	23	24	25 • ANZAC Day	26	27
28 • Term 2 starts	29	30	1	2	3	4



**KO TĀTOU
THIS IS US**
Biosecurity protects what you love



CERATOCYSTIS WILT CAN TRAVEL FROM
- All over the world



IF YOU COME ACROSS ONE OF THESE:
CATCH IT! SNAP IT! REPORT IT!

0800 665 825

OR CONTACT MPI on: **0800 80 99 66**

Biosecurity Planning

Build a biosecurity plan in 5 easy steps

As a grower or person in charge of an orchard, you need to have a plan that covers the steps you take when moving machinery, tools and plant material on and off your property, how you trace and record all these things, how you manage the risks that might already be present, and the steps you should take if you see anything unusual.

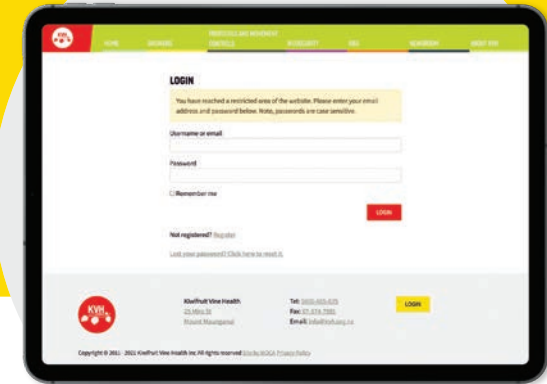
By having a plan written down you can get everybody who's involved in your business on the same page.

How do I complete a biosecurity plan?

KVH has designed a biosecurity plan template that you can personalise and complete either on paper or online, depending on your preference. Both versions require:

- the name of the person completing the plan;
- the KPIN or KPINS the plan is being completed for;
- a dated declaration that the person completing the plan is the person responsible, and that the information provided is true and correct in regard to actions taken to manage biosecurity risk.

You need to keep your plan on file so that you can show it to auditors. If you choose to complete your plan online, you can then save a PDF copy.



Fill in your plan online at
www.kvh.org.nz



Prefer handwriting? Fill in a printed booklet from www.kvh.org.nz or ask for one to be posted to you by phoning 0800 665 825. Your post-harvest team will also be able to help.

May / 25

New Zealand's kiwifruit growing community
is committed to biosecurity excellence

MONDAY	TUESDAY	WEDNESDAY	THURSDAY	FRIDAY	SATURDAY	SUNDAY
28	29	30	1	2	3	4
5	6	7	8	9	10	11 • Mother's Day
12	13	14	15	16	17	18
19	20	21	22	23	24	25
26	27	28	29	30	31	1



**KO TĀTOU
THIS IS US**
Biosecurity protects what you love



IF YOU COME ACROSS ONE OF THESE:
CATCH IT! SNAP IT! REPORT IT!

0800 665 825

OR CONTACT MPI on: **0800 80 99 66**

Spongy Moth



MALE
30-40mm
wingspan



FEMALE
90mm
wingspan



Egg Mass

LOOK OUT
FOR EGG
MASSES ON:

Formerly
known as
the Asian
Gypsy Moth



June / 25

New Zealand's kiwifruit growing community is committed to biosecurity excellence

MONDAY	TUESDAY	WEDNESDAY	THURSDAY	FRIDAY	SATURDAY	SUNDAY
26	27	28	29	30	31	1
2	3	4	5	6	7	8
• King's Birthday						
9	10	11	12	13	14	15
16	17	18	19	20	21	22
				• Matariki		
23	24	25	26	27	28	29
				• Term 2 ends		
30	1	2	3	4	5	6



KO TĀTOU
THIS IS US
Biosecurity protects what you love



SPONGY MOTH CAN TRAVEL FROM

- China - Japan - Russia - South Korea



IF YOU COME ACROSS ONE OF THESE:
CATCH IT! SNAP IT! REPORT IT!

0800 665 825

OR CONTACT MPI on: **0800 80 99 66**

Resources and Support



Stay in touch

KVH offers a range of ways for you to keep up to date with all things related to kiwifruit biosecurity and vine health:

- We publish regular articles in our online Newsroom at kvh.org.nz
- Sign up to our e-news Bulletin, delivered directly to your mailbox
- Follow us on Twitter (@KVHNZ), Facebook (Kiwifruit Vine Health KVH) or YouTube (Kiwifruit Vine Health-KVH)
- Listen to our Snapshot podcasts (Kiwifruit Vine Health) for free on iTunes or Soundcloud.

Email info@kvh.org.nz to subscribe or for more information.

Free biosecurity orchard signs

KVH-produced corflute biosecurity signage is available for orchard entry points free of charge.

These signs are to raise biosecurity awareness for people entering the orchard, and to help you set agreed expectations for best biosecurity practice.

Contact your post-harvest or email info@kvh.org.nz with a postal address and we will send signs to you.



July / 25

New Zealand's kiwifruit growing community is committed to biosecurity excellence

Where to get support

There are many places, people, and ways to get support across the kiwifruit industry. You are never alone, and the industry prides itself on providing tools, resources, and advice to help growers manage orchard practices and biosecurity risk. We have listed just a few examples on these pages.

Technical questions

If you have technical questions about on orchard practices, please contact your post-harvest technical manager or grower liaison team.



MONDAY	TUESDAY	WEDNESDAY	THURSDAY	FRIDAY	SATURDAY	SUNDAY
30	1	2	3	4	5	6
7	8	9	10	11	12	13
14	15	16	17	18	19	20
• Term 3 starts						
21	22	23	24	25	26	27
28	29	30	31	1	2	3



IF YOU COME ACROSS ONE OF THESE:
CATCH IT! SNAP IT! REPORT IT!

0800 665 825

OR CONTACT MPI on: **0800 80 99 66**

Yellow Peach Moth



ADULTS
have a
wingspan up
to 3cm

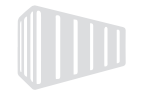
Pale yellow
wings with
black spots

LARVAE
cause damage
by boring holes
in fruit, leaves
and stems



LARVAE
Buff coloured
with a dark
head and about
2cm long

I CAN ENTER
NZ ON:



0 cm

3 cm

Adults have a wingspan
of up to 3cm

August / 25

New Zealand's kiwifruit growing community is committed to biosecurity excellence

MONDAY	TUESDAY	WEDNESDAY	THURSDAY	FRIDAY	SATURDAY	SUNDAY
28	29	30	31	1	2	3
4	5	6	7	8	9	10
11	12	13	14	15	16	17
18	19	20	21	22	23	24
25	26	27	28	29	30	31



**KO TĀTOU
THIS IS US**
Biosecurity protects what you love



YELLOW PEACH MOTH CAN TRAVEL FROM

- China
- Korea
- Japan
- India
- Pakistan
- Australia
- South East Asia



IF YOU COME ACROSS ONE OF THESE:
CATCH IT! SNAP IT! REPORT IT!

0800 665 825

OR CONTACT MPI on: **0800 80 99 66**

Brown Marmorated Stink Bug

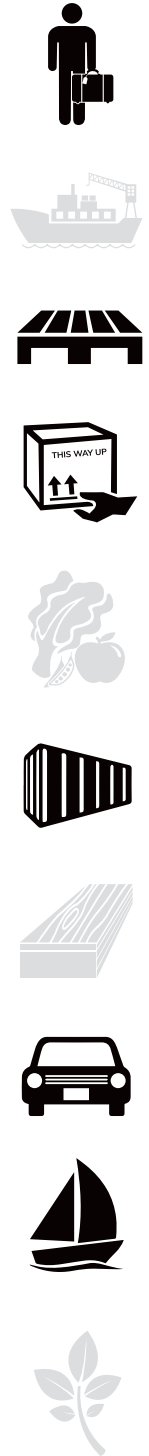


Striped antennae

Striped bands on abdomen

I CAN ENTER NZ ON:

I'm larger than NZ shield bugs and around the size of a 10c coin



September / 25

New Zealand's kiwifruit growing community is committed to biosecurity excellence

MONDAY	TUESDAY	WEDNESDAY	THURSDAY	FRIDAY	SATURDAY	SUNDAY
1	2	3	4	5	6	7 • Father's Day
8	9	10	11	12	13	14
15	16	17	18	19	20	21
22	23	24	25 • Term 3 ends	26	27	28 • Daylight savings starts
29 • South Canterbury Anniversary	30	1	2	3	4	5



KO TĀTOU
THIS IS US
Biosecurity protects what you love



BROWN MARMORATED STINK BUG CAN TRAVEL FROM

- North America
- China
- Japan
- Korea
- Chile
- Europe
- Taiwan



IF YOU COME ACROSS ONE OF THESE:
CATCH IT! SNAP IT! REPORT IT!

0800 665 825

OR CONTACT MPI on: **0800 80 99 66**

Fruit Flies



Queensland
Fruit Fly
6-8mm long



Oriental Fruit Fly
7mm long



Mediterranean
Fruit Fly 6mm long



Larvae in
fruit 2mm long

We are
all small and
colourful flies

I CAN ENTER
NZ ON:

-
-
-
-
-
-
-
-
-
-

October / 25

New Zealand's kiwifruit growing community is committed to biosecurity excellence

MONDAY	TUESDAY	WEDNESDAY	THURSDAY	FRIDAY	SATURDAY	SUNDAY
29	30	1	2	3	4	5
6 • Term 4 starts	7	8	9	10	11	12
13	14	15	16	17	18	19
20	21	22	23	24 • Hawke's Bay Anniversary	25	26
27 • Labour Day	28	29	30	31	1	2



KO TĀTOU
THIS IS US
Biosecurity protects what you love



FRUIT FLIES CAN TRAVEL FROM

- Australia
- Mediterranean
- USA
- Pacific Islands
- South America
- South East Asia
- Africa



IF YOU COME ACROSS ONE OF THESE:
CATCH IT! SNAP IT! REPORT IT!

0800 665 825

OR CONTACT MPI on: **0800 80 99 66**

Supporting growers during adverse events

Emergency Response Management

During a biosecurity response, the industry comes together - led by KVH - to develop and implement various activities quickly and effectively that limit impacts on growers and orchards, and support continuing production.

The same response model, and way of working, has been adopted for use during other types of responses to significant adverse events. We call this the Emergency Response Management (ERM) framework.

The ERM framework ensures...

Coordinated support

Coordinated by KVH, your industry support is efficient and timely.

Fast recovery

The industry response helps limit impacts on your orchard and production.

Preparedness

Expertise from across the industry is leveraged, and well trained, so we are ready for significant emergencies of all kinds.

Together, we can ensure a stronger, faster response to protect growers and the kiwifruit industry in times of crisis



November / 25

New Zealand's kiwifruit growing community is committed to biosecurity excellence

What happens next?

KVH has successfully led the industry's biosecurity responses for over a decade. With the expansion of our role to coordinating responses to other large scale emergencies (such as weather events and natural disasters) we now also have:

- response plans that include regional risks,
- information and communication plans
- operational capability and expertise across the industry
- running exercises to test and refine our plans.

Read more about the framework and responses at kvh.org.nz.



MONDAY	TUESDAY	WEDNESDAY	THURSDAY	FRIDAY	SATURDAY	SUNDAY
27	28	29	30	31	1	2
3 <small>• Marlborough Anniversary</small>	4	5	6	7	8	9
10	11	12	13 <small>• Canterbury Anniversary</small>	14	15	16
17	18	19	20	21	22	23
24	25	26	27	28	29	30



IF YOU COME ACROSS ONE OF THESE:
CATCH IT! SNAP IT! REPORT IT!

0800 665 825

OR CONTACT MPI on: **0800 80 99 66**

Yellow Spotted Stink Bug



Blackish-brown and covered with small yellow spots

SIZE
Up to 23mm long

I CAN ENTER
NZ ON:

I'm larger than
NZ shield bugs
and a little bigger
than a 20c
coin



December / 25

New Zealand's kiwifruit growing community is committed to biosecurity excellence

MONDAY	TUESDAY	WEDNESDAY	THURSDAY	FRIDAY	SATURDAY	SUNDAY
1 <ul style="list-style-type: none">Chatham Islands AnniversaryWestland Anniversary	2	3	4	5	6	7
8	9	10	11	12	13	14
15	16	17	18	19 <ul style="list-style-type: none">Term 4 ends	20	21
22	23	24 <ul style="list-style-type: none">Christmas Eve	25 <ul style="list-style-type: none">Christmas Day	26 <ul style="list-style-type: none">Boxing Day	27	28
29	30 <ul style="list-style-type: none">New Year's Eve	31	1	2	3	4



They can ruin entire crops by feeding and sucking out all the sugar and nutrients. They could cause millions of dollars of damage to Bay of Plenty orchards



They get into new countries by hiding in cars being transported, people's luggage, or mail



If they get crushed or are disturbed they let off a horrible smell



Come on guys, get in their way and all over their food

KO TĀTOU
THIS IS US
Biosecurity protects what you love



YELLOW SPOTTED STINK BUG CAN TRAVEL FROM

- Japan
- China
- Vietnam
- Taiwan
- Albania
- Brazil



IF YOU COME ACROSS ONE OF THESE:
CATCH IT! SNAP IT! REPORT IT!

0800 665 825

OR CONTACT MPI on: **0800 80 99 66**



KIWIFRUIT'S MOST UNWANTED

Kiwifruit Vine Health (KVH) undertakes readiness and response planning to minimise the impact of future biosecurity incursions to the kiwifruit industry.

The following organisms are considered the highest risk to the kiwifruit industry, based on the likelihood of them getting here and establishing; and the potential production and market access implications should this occur.

Our next incursion won't necessarily be an organism on this list however. We all need to be on alert for any unusual pests or plant symptoms and maintain on-orchard biosecurity best practice ALL the time.

FRUIT FLIES

Queensland, Oriental, Mediterranean

- High likelihood of entry – have crossed our borders many times.
- Production impacts for a range of horticultural crops, but considered low for kiwifruit.
- Severe market access restrictions, particularly for Queensland Fruit Fly which is not present in most major kiwifruit markets.



Risk Months: Sep – June
I can enter NZ hiding on:



CERATOCYSTIS WILT

- Soil-borne pathogen causing damage to kiwifruit in Brazil – reports of up to 50% vine loss.
- Vine death can occur extremely rapidly after expression of symptoms. Hayward and Gold3 known to be impacted.
- Distributed globally and other strains may be of concern to kiwifruit.
- May be eradicable with good biosecurity practices and if detected early.



Risk Months: Year Round
I can enter NZ hiding on:



BROWN MARMORATED STINK BUG

- Pierces kiwifruit resulting in fruit drop and rot. Fruit loss is typically 5-10% but up to 30% on worst blocks.
- Extremely difficult to eradicate – early detection is essential.
- Major nuisance pest overwintering inside houses in huge numbers.
- High likelihood of entry as a hitchhiker on shipping containers, cars, machinery and luggage.



Risk Months: Sep – Apr
I can enter NZ on:



SPOTTED LANTERNFLY

- Attacks over 70 host species, including kiwifruit - eradication efforts overseas have been unsuccessful.
- Production impacts from extensive feeding resulting in oozing wounds, wilting, and sooty mould growth, which can be prolific.
- Hitchhiker pest that is hard to control – tends to fly out of orchards when sprayed and return later.



Risk Months: Sep – May
Look out for my eggs on:



PSA NON NZ STRAINS

- NZ has one form of Psa – others exist internationally and could cause severe impacts if they get here.
- Psa in Japan and Korea appears to be more virulent to Hayward than the NZ form of Psa.
- New Psa strains could be more virulent to ‘Psa tolerant’ cultivars.
- May be difficult to distinguish from “common” Psa so best practice is not to spread any form.



Risk Months: Year Round
I can enter NZ hiding on:



WHITE PEACH SCALE

- Regularly intercepted on imported fruit. Therefore no imported fruit should be taken on to orchards as a precaution.
- Up to 20% production losses reported on Italian orchards.
- NZ environment considered favourable for establishment.



Risk Months: Nov – Mar
I can enter NZ hiding on:



YELLOW SPOTTED STINK BUG

- Large stink bugs with distinctive yellow markings. Adults are about the size of a 20c coin.
- Attacks more than 50 host species, including kiwifruit.
- Feeding damage can result in significant fruit loss, similar to BMSB.
- Known hitchhiker pest which can arrive on shipping containers, cars, and machinery.



Risk Months: Sep – Apr
I can enter NZ on:



INVASIVE PHYTOPHTHORAS

- Known as the plant killers – a group of significant plant pathogens and a major threat to all plant sectors.
- Species have caused significant impacts to kiwifruit offshore. Many other known and unknown species could also cause impacts under certain conditions.
- Easily spread, particularly with plant material movements.
- Can spread in plants showing no symptoms.



Risk Months: Year Round
I can enter NZ hiding on:



CATCH IT



SNAP IT



REPORT IT

TO REPORT UNUSUAL PESTS OR DISEASES

CALL THE MPI HOTLINE 0800 80 99 66 OR KVH 0800 665 825

www.kvh.org.nz

A KIWIFRUIT GROWING COMMUNITY COMMITTED TO BIOSECURITY EXCELLENCE

*We can all keep unwanted pests
and diseases out of New Zealand.*

Pests and diseases from offshore can cause serious harm to our kiwifruit orchards and businesses, as well as New Zealand's unique environment and primary industries.

That's why KVH works across the kiwifruit industry, with everyone involved in growing and selling New Zealand kiwifruit, to pursue biosecurity resilience for all.

This calendar features our most unwanted pests. Our best chance at keeping them from establishing in our orchards includes surveillance among people who know what to look for and can identify and report them, should they arrive.

By working together, we can help protect New Zealand's kiwifruit industry from unwanted biosecurity risks.

kvh.org.nz | Tel: 0800 665 825 | Email: info@kvh.org.nz



IF YOU COME ACROSS ANY OF THE PESTS FEATURED IN THIS CALENDAR:

CATCH IT! SNAP IT! REPORT IT! 0800 665 825

OR CONTACT MPI on: **0800 80 99 66**

