



## Risk of beehive movements to the South Island

The movement of beehives from the North Island to South Island is a potential pathway for spreading the bacteria Psa-V.

Beehives that have been used on a kiwifruit orchard in the North Island:

- **Cannot be moved directly to a kiwifruit orchard in the South Island.** This is a legal requirement under the National Kiwifruit Pathway Management Plan 2022 (Pathway Plan), which sits under the Biosecurity Act 1993.
- **Should be stood down for no less than ten days at a North Island location** more than 5km away from a kiwifruit orchard or nursery prior to any North to South movements across the Cook Strait.
- Beehives that are not destined for kiwifruit orchards may still pose a risk and **should not be placed within 5km of a kiwifruit orchard and preferably not brought into the South Island kiwifruit growing region** (see indicative map overleaf).
- Contact KVH on [info@kvh.org.nz](mailto:info@kvh.org.nz) or 0800 665 825 to ensure any planned beehive movements are compliant.

### Value of keeping Psa-V out of the South Island

Remaining free of Psa-V offers key benefits to the kiwifruit industry:

- Psa has caused over \$1B in damage nationwide.
- The South Island's cooler climate could worsen its impact if introduced.
- As the only Psa-V-free region, the South Island plays a vital role in supplying clean plant material to support the industry within New Zealand and offshore.

### Risk associated with beehive movements between the North and South islands

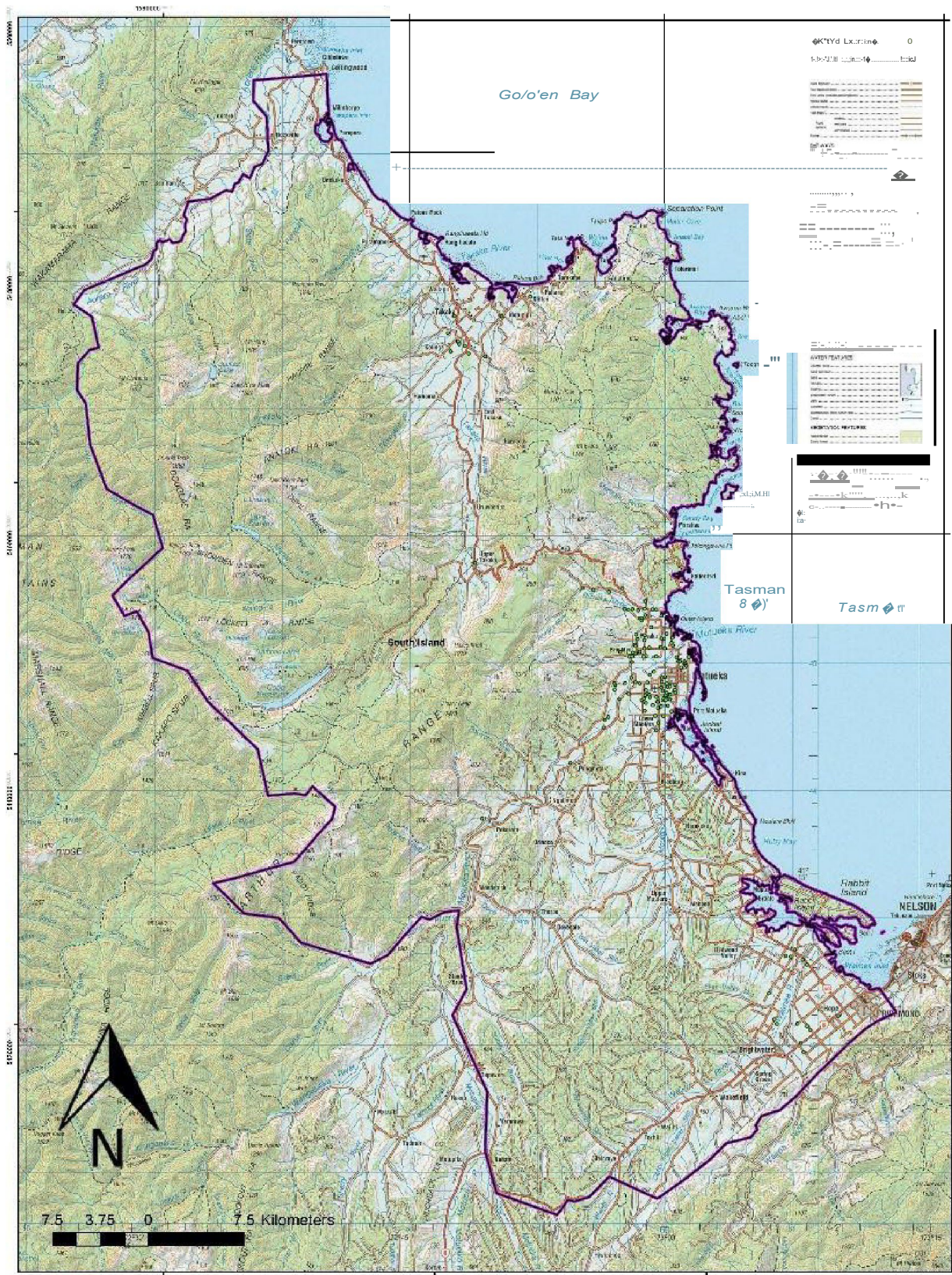
- Foraging bees can carry Psa-V.
- Psa-V can survive for 6-9 days in a beehive.
- A research-based stand-down period of 10 days at a location 5km away from the nearest kiwifruit orchard is required before moving bees from a Psa-V infected region into a Psa-V free region.



## Pathway Plan requirements

The Pathway Plan sets rules to prevent the spread of pests and diseases:

- Movement of risk goods, including beehives used on kiwifruit orchards, is restricted across the Cook Strait and KVH authorisation is required for these movements.
- Beekeepers should contact KVH if planning to move beehives to a South Island kiwifruit growing location.
- Hives, pallets, and vehicles must be free of plant material and debris when entering or leaving orchards.
- Associated vehicles, machinery and equipment must be sanitised with a sanitiser approved by KVH.
- Machinery and equipment must be stored and transported in a manner that avoids contamination.
- Beekeepers must have a Biosecurity Plan and present it to growers (Note: templates are available on the KVH website).



# South Island

Note: boundary is indicative only of the South Island kiwifruit growing region.