

**2024  
Calendar**

**We can all keep unwanted pests and  
diseases out of New Zealand**

# **A Kiwifruit Growing Community Committed to Biosecurity Excellence**

Image: Courtesy of Zespri Image Library

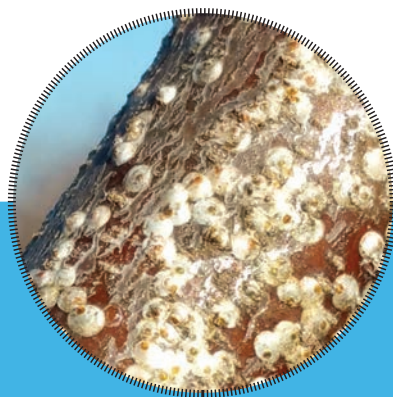


**KO TĀTOU  
THIS IS US**  
Biosecurity protects what you love





# White Peach Scale



I CAN ENTER  
NZ ON:

Pink-yellow  
in colour

Scale are  
pear-shaped  
and 2.0 to  
2.5mm long



# January / 24

New Zealand's kiwifruit growing community is committed to biosecurity excellence

MONDAY	TUESDAY	WEDNESDAY	THURSDAY	FRIDAY	SATURDAY	SUNDAY
1  • New Year's Day	2  • Day after New Year's Day	3	4	5	6	7
8	9	10	11	12	13	14
15	16	17	18	19	20	21
22  • Wellington Anniversary	23	24	25	26	27	28
29  • Auckland Anniversary • Nelson Anniversary • Term 1 starts 29 Jan earliest & 7 Feb latest	30	31	1	2	3	4



**Ko Tātou**  
THIS IS US BIOSECURITY 2025



WHITE PEACH SCALE IS DISTRIBUTED  
ACROSS THE WORLD

IF YOU COME ACROSS ONE OF THESE:  
**CATCH IT! SNAP IT! REPORT IT!**  
**0800 665 825**  
OR CONTACT MPI on: **0800 80 99 66**

# Northern Giant Hornet

Likely hitched a ride to the US/Canada a few years ago on a cargo ship

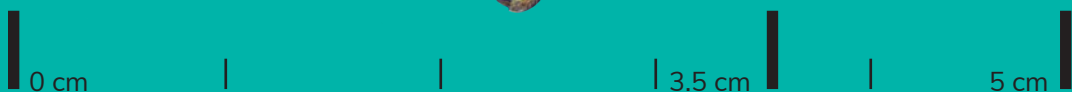
I CAN ENTER NZ ON:



Light orange head

Orange and brown/black striped body

Stinger is just over a cm long



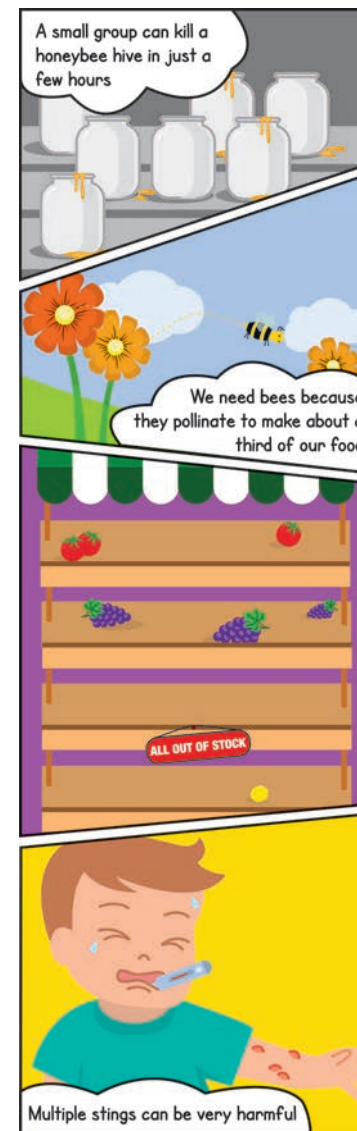
Queens can be bigger than 5 cm



# February / 24

New Zealand's kiwifruit growing community is committed to biosecurity excellence

MONDAY	TUESDAY	WEDNESDAY	THURSDAY	FRIDAY	SATURDAY	SUNDAY
29	30	31	1	2	3	4
5	6 • Waitangi Day	7	8	9	10	11
12	13	14 • Valentines Day	15	16	17	18
19	20	21	22	23	24	25
26	27	28	29	1	2	3



**KO TĀTOU  
THIS IS US**  
Biosecurity protects what you love



ASIAN GIANT HORNET CAN TRAVEL FROM

- Japan
- Taiwan
- North America
- South Korea
- China



# Spotted Lanternfly

Adults are up to 2.5cm long  
and 1.2cm wide



Hind wings have red and black patches

Yellow abdomen with black bands

I CAN ENTER  
NZ ON:

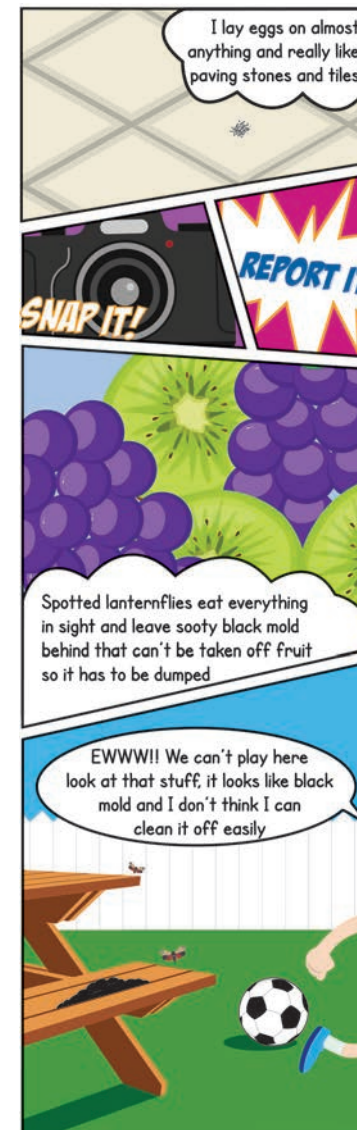
Photo credit:  
Pennsylvania Department of Agriculture



# March / 24

New Zealand's kiwifruit growing community is committed to biosecurity excellence

MONDAY	TUESDAY	WEDNESDAY	THURSDAY	FRIDAY	SATURDAY	SUNDAY
28	29	30	31	1	2	3
4	5	6	7	8 • International Women's Day	9	10
11 • Taranaki Anniversary	12	13	14	15	16	17 • St Patrick's Day
18	19	20	21	22	23	24
25 • Otago Anniversary	26	27	28	29 • Good Friday	30	31 • Easter Sunday



**KO TĀTOU  
THIS IS US**  
Biosecurity protects what you love



LANTERNFLY CAN TRAVEL FROM

- China
- India
- Vietnam
- Korea
- USA



IF YOU COME ACROSS ONE OF THESE:

**CATCH IT! SNAP IT! REPORT IT!**

**0800 665 825**

OR CONTACT MPI on: **0800 80 99 66**

# Ceratocystis Wilt

Reports of up to  
50% vine loss on  
affected kiwifruit  
orchards in Brazil

Xylem  
browning



Root damage  
and browning

When neighbouring  
vines on-orchard get  
infected via roots,  
a circular pattern of  
dead vines is seen

I CAN ENTER  
NZ ON:





# April / 24

New Zealand's kiwifruit growing community is committed to biosecurity excellence

MONDAY	TUESDAY	WEDNESDAY	THURSDAY	FRIDAY	SATURDAY	SUNDAY
1 • Easter Monday	2 • Southland Anniversary	3	4	5	6	7 • Daylight savings ends
8	9	10	11	12 • Term 1 ends	13	14
15	16	17	18	19	20	21
22	23	24	25	26	27	28
29 • Term 2 starts	30	1	2 • ANZAC Day	3	4	5



**KO TĀTOU  
THIS IS US**  
Biosecurity protects what you love



CERATOCYSTIS WILT CAN TRAVEL FROM  
- All over the world

IF YOU COME ACROSS ONE OF THESE:  
**CATCH IT! SNAP IT! REPORT IT!**  
**0800 665 825**  
OR CONTACT MPI on: **0800 80 99 66**

# Biosecurity Planning

## Build a biosecurity plan in 5 easy steps

As a grower or person in charge of an orchard, you need to have a plan that covers the steps you take when moving machinery, tools and plant material on and off your property, how you trace and record all these things, how you manage the risks that might already be present, and the steps you should take if you see anything unusual.

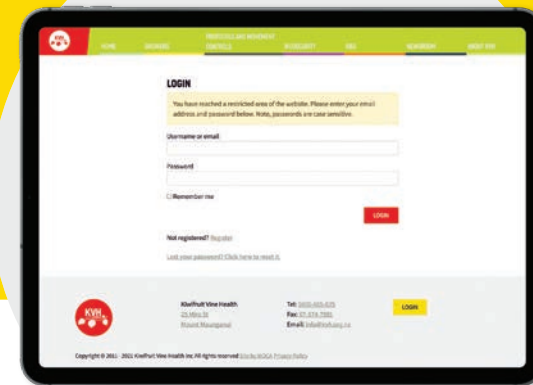
By having a plan written down you can get everybody who's involved in your business on the same page.

## How do I complete a biosecurity plan?

KVH has designed a biosecurity plan template that you can personalise and complete either on paper or online, depending on your preference. Both versions require:

- the name of the person completing the plan;
- the KPIN or KPINS the plan is being completed for;
- a dated declaration that the person completing the plan is the person responsible, and that the information provided is true and correct in regard to actions taken to manage biosecurity risk.

You need to keep your plan on file so that you can show it to auditors. If you choose to complete your plan online, you can then save a PDF copy.



Fill in your plan online at  
[www.kvh.org.nz](http://www.kvh.org.nz)



Prefer handwriting? Fill in a printed booklet from [www.kvh.org.nz](http://www.kvh.org.nz) or ask for one to be posted to you by phoning 0800 665 825. Your post-harvest team will also be able to help.

# May / 24

New Zealand's kiwifruit growing community  
is committed to biosecurity excellence

MONDAY	TUESDAY	WEDNESDAY	THURSDAY	FRIDAY	SATURDAY	SUNDAY
29	30	1	2	3	4	5
6	7	8	9	10	11	12
13	14	15	16	17	18	19
20	21	22	23	24	25	26
27	28	29	30	31	1	2



**KO TĀTOU  
THIS IS US**  
Biosecurity protects what you love



IF YOU COME ACROSS ONE OF THESE:

**CATCH IT! SNAP IT! REPORT IT!**

**0800 665 825**

OR CONTACT MPI on: **0800 80 99 66**



# Spongy Moth



MALE  
30-40mm  
wingspan



FEMALE  
90mm  
wingspan



Egg Mass

LOOK OUT  
FOR EGG  
MASSES ON:

Formerly  
known as  
the Asian  
Gypsy Moth



# June / 24

New Zealand's kiwifruit growing community is committed to biosecurity excellence

MONDAY	TUESDAY	WEDNESDAY	THURSDAY	FRIDAY	SATURDAY	SUNDAY
27	28	29	30	31	1	2
3 • King's Birthday	4	5	6	7	8	9
10	11	12	13	14	15	16
17	18	19	20	21	22	23
24	25	26	27 • Matariki	28	29	30

## Where to get support

There are many places, people, and ways to get support across the kiwifruit industry. You are never alone, and the industry prides itself on providing tools, resources, and advice to help growers manage orchard practices and biosecurity risk. We have listed just a few examples on these pages.

## Technical questions

If you have technical questions about on orchard practices, please contact your post-harvest technical manager or grower liaison team.



IF YOU COME ACROSS ONE OF THESE:  
**CATCH IT! SNAP IT! REPORT IT!**  
**0800 665 825**  
 OR CONTACT MPI on: **0800 80 99 66**

# Resources and Support



## Build a biosecurity plan in 5 easy steps

KVH offers a range of ways for you to keep up to date with all things related to kiwifruit biosecurity and vine health:

- We publish regular articles in our online Newsroom at [kvh.org.nz](http://kvh.org.nz)
- Sign up to our e-news Bulletin, delivered directly to your mailbox
- Follow us on Twitter (@KVHNZ), Facebook (Kiwifruit Vine Health KVH) or YouTube (Kiwifruit Vine Health-KVH)
- Listen to our Snapshot podcasts (Kiwifruit Vine Health) for free on iTunes or Soundcloud.

Email [info@kvh.org.nz](mailto:info@kvh.org.nz) to subscribe or for more information.

## Free biosecurity orchard signs

KVH-produced corflute biosecurity signage is available for orchard entry points free of charge.

These signs are to raise biosecurity awareness for people entering the orchard, and to help you set agreed expectations for best biosecurity practice.

Contact your post-harvest or email [info@kvh.org.nz](mailto:info@kvh.org.nz) with a postal address and we will send signs to you.





# July / 24

New Zealand's kiwifruit growing community is committed to biosecurity excellence

MONDAY	TUESDAY	WEDNESDAY	THURSDAY	FRIDAY	SATURDAY	SUNDAY
1	2	3	4	5	6	7
8	9	10	11	12	13	14
15	16	17	18	19	20	21
22	23	24	25	26	27	28
29	30	31	1	2	3	4

• Term 2 ends

• Term 3 starts



**KO TĀTOU  
THIS IS US**  
Biosecurity protects what you love



SPONGY MOTH CAN TRAVEL FROM

- China - Japan - Russia - South Korea



IF YOU COME ACROSS ONE OF THESE:

**CATCH IT! SNAP IT! REPORT IT!**

**0800 665 825**

OR CONTACT MPI on: **0800 80 99 66**

# Yellow Peach Moth



Pale yellow wings with black spots

**ADULTS**  
have a wingspan up to 3cm

**LARVAE**  
cause damage by boring holes in fruit, leaves and stems



**LARVAE**  
Buff coloured with a dark head and about 2cm long

I CAN ENTER NZ ON:



Adults have a wingspan of up to 3cm



# August / 24

New Zealand's kiwifruit growing community is committed to biosecurity excellence

MONDAY	TUESDAY	WEDNESDAY	THURSDAY	FRIDAY	SATURDAY	SUNDAY
29	30	31	1	2	3	4
5	6	7	8	9	10	11
12	13	14	15	16	17	18
19	20	21	22	23	24	25
26	27	28	29	30	31	1



**KO TĀTOU  
THIS IS US**  
Biosecurity protects what you love



## YELLOW PEACH MOTH CAN TRAVEL FROM

- China
- Korea
- Japan
- India
- Pakistan
- Australia
- South East Asia

**IF YOU COME ACROSS ONE OF THESE:  
CATCH IT! SNAP IT! REPORT IT!**  
**0800 665 825**  
OR CONTACT MPI on: **0800 80 99 66**



# Brown Marmorated Stink Bug

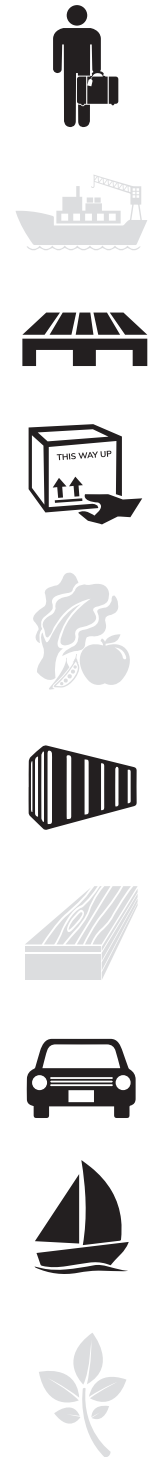


Striped antennae

Striped bands on abdomen

I CAN ENTER  
NZ ON:

I'm larger  
than NZ shield  
bugs and around  
the size of a  
10c coin



# September / 24

New Zealand's kiwifruit growing community is committed to biosecurity excellence

MONDAY	TUESDAY	WEDNESDAY	THURSDAY	FRIDAY	SATURDAY	SUNDAY
26	27	28	29	30	31	1 • Father's Day
2	3	4	5	6	7	8
9	10	11	12	13	14	15
16	17	18	19	20	21	22
23 • South Canterbury Anniversary	24	25	26	27 • Term 3 ends	28	29 • Daylight savings starts
30	1	2	3	4	5	6



**KO TĀTOU  
THIS IS US**  
Biosecurity protects what you love



## BROWN MARMORATED STINK BUG

- Eastern USA (greatest risk)
- All other USA
- China
- Japan
- Korea
- Chile
- Europe
- Taiwan

**IF YOU COME ACROSS ONE OF THESE:  
CATCH IT! SNAP IT! REPORT IT!**  
**0800 665 825**  
OR CONTACT MPI on: **0800 80 99 66**

# Fruit Flies



Queensland  
Fruit Fly  
6-8mm long

I CAN ENTER  
NZ ON:



Oriental Fruit Fly  
7mm long



Mediterranean  
Fruit Fly 6mm long



Larvae in  
fruit 2mm long

We are  
all small and  
colourful flies





# October / 24

New Zealand's kiwifruit growing community is committed to biosecurity excellence

MONDAY	TUESDAY	WEDNESDAY	THURSDAY	FRIDAY	SATURDAY	SUNDAY
30	1	2	3	4	5	6
7	8	9	10	11	12	13
14 • Term 4 starts	15	16	17	18	19	20
21	22	23	24	25 • Hawke's Bay Anniversary	26	27
28 • Labour Day	29	30	31	1	2	3



**KO TĀTOU  
THIS IS US**  
Biosecurity protects what you love



## FRUIT FLIES

- Australia
- South America
- Mediterranean
- South East Asia
- USA
- Africa
- Pacific Islands

IF YOU COME ACROSS ONE OF THESE:

**CATCH IT! SNAP IT! REPORT IT!**

**0800 665 825**

OR CONTACT MPI on: **0800 80 99 66**

# Reporting is important

## 10 thousand

Suspected pests and diseases are reported to the Biosecurity New Zealand hotline every year (approximately).

## What happens if we don't keep watch?

## 6 months+

The time it could take between infection with a soil-borne disease like *Ceratocystis fimbriata* to when symptoms appear.

## \$1 billion

The estimated cost of Psa to the New Zealand kiwifruit industry.

## \$430 million

The potential market access impact of a fruit fly incursion in Te Puke.

Have you seen something unusual?



**CATCH IT**



**SNAP IT**



**REPORT IT**

To make a report call KVH on **0800 665 825**, or the Biosecurity New Zealand hotline 24 hours a day, 7 days a week on **0800 80 99 66**.

You can also make a pest or bug report through the free Find-A-Pest app.



**COVID-19 reminded us that biosecurity requires a team effort, where all pitch in. We're kaitiaki, we're guardians, and our team of 5 million has collective responsibility for protecting what we've got from the impacts of pests and diseases.**

# November / 24

New Zealand's kiwifruit growing community is committed to biosecurity excellence

**Seen something unusual? Report it, even if you're not sure**

Pests and diseases can spread quickly between orchards and over large distances. It's essential that reports of new finds are made as soon as possible, so that we have the best chance of containing them before they spread.

If it's a pest or bug you're reporting, catch it if you can and take a photo. If it's a disease symptom on a plant, tree, or vine, take some clear photos but try not to touch it. Remember, the sooner a report is made and looked into, the more we can do to slow the spread and limit impacts.



MONDAY	TUESDAY	WEDNESDAY	THURSDAY	FRIDAY	SATURDAY	SUNDAY
28	29	30	31	1	2	3
4 • Marlborough Anniversary	5	6	7	8	9	10
11	12	13	14 • Canterbury Anniversary	15	16	17
18	19	20	21	22	23	24
25	26	27	28	29	30	1

**IF YOU COME ACROSS ONE OF THESE:  
CATCH IT! SNAP IT! REPORT IT!**  
**0800 665 825**  
OR CONTACT MPI on: **0800 80 99 66**



# Yellow Spotted Stink Bug



Blackish-brown and covered with small yellow spots

**SIZE**  
Up to 23mm long

I CAN ENTER  
NZ ON:

I'm larger than  
NZ shield bugs  
and around the  
size of a 10c  
coin



# December / 24

New Zealand's kiwifruit growing community is committed to biosecurity excellence

MONDAY	TUESDAY	WEDNESDAY	THURSDAY	FRIDAY	SATURDAY	SUNDAY
26	27	28	29	30	31	1
2 • Chatham Islands Anniversary • Westland Anniversary	3	4	5	6	7	8
9	10	11	12	13	14	15
16	17	18	19 • Term 4 ends	20	21	22
23	24 • Christmas Eve	25 • Christmas Day	26 • Boxing Day	27	28	29
30 • New Year's Eve	31	1	2	3	4	5



**KO TĀTOU  
THIS IS US**  
Biosecurity protects what you love



**YELLOW SPOTTED STINK BUG**

- Japan

- China

- Vietnam

- Taiwan



IF YOU COME ACROSS ONE OF THESE:

**CATCH IT! SNAP IT! REPORT IT!**

**0800 665 825**

OR CONTACT MPI on: **0800 80 99 66**



# KIWIFRUIT'S MOST UNWANTED

Kiwifruit Vine Health (KVH) undertakes readiness and response planning to minimise the impact of future biosecurity incursions to the kiwifruit industry.

The following organisms are considered the highest risk to the kiwifruit industry, based on the likelihood of them getting here and establishing; and the potential production and market access implications should this occur.

Our next incursion won't necessarily be an organism on this list however. We all need to be on alert for any unusual pests or plant symptoms and maintain on-orchard biosecurity best practice ALL the time.

## FRUIT FLIES

Queensland, Oriental, Mediterranean

- High likelihood of entry – have crossed our borders many times.
- Production impacts for a range of horticultural crops, but considered low for kiwifruit.
- Severe market access restrictions, particularly for Queensland Fruit Fly which is not present in most major kiwifruit markets.



Risk Months: Sep – June  
I can enter NZ hiding on:



## CERATOCYSTIS WILT

- Soil-borne pathogen causing damage to kiwifruit in Brazil – reports of up to 50% vine loss.
- Vine death can occur extremely rapidly after expression of symptoms. Hayward and Gold3 known to be impacted.
- Distributed globally and other strains may be of concern to kiwifruit.
- May be eradicable with good biosecurity practices and if detected early.



Risk Months: Year Round  
I can enter NZ hiding on:



## BROWN MARMORATED STINK BUG

- Pierces kiwifruit resulting in fruit drop and rot. Fruit loss is typically 5-10% but up to 30% on worst blocks.
- Extremely difficult to eradicate – early detection is essential.
- Major nuisance pest overwintering inside houses in huge numbers.
- High likelihood of entry as a hitchhiker on shipping containers, cars, machinery and luggage.



Risk Months: Sep – Apr  
I can enter NZ on:



## SPOTTED LANTERNFLY

- Attacks over 70 host species, including kiwifruit - eradication efforts overseas have been unsuccessful.
- Production impacts from extensive feeding resulting in oozing wounds, wilting, and sooty mould growth, which can be prolific.
- Hitchhiker pest that is hard to control – tends to fly out of orchards when sprayed and return later.



Risk Months: Sep – May  
Look out for my eggs on:



## PSA NON NZ STRAINS

- NZ has one form of Psa – others exist internationally and could cause severe impacts if they get here.
- Psa in Japan and Korea appears to be more virulent to Hayward than the NZ form of Psa.
- New Psa strains could be more virulent to 'Psa tolerant' cultivars.
- May be difficult to distinguish from "common" Psa so best practice is not to spread any form.



Risk Months: Year Round  
I can enter NZ hiding on:



## WHITE PEACH SCALE

- Regularly intercepted on imported fruit. Therefore no imported fruit should be taken on to orchards as a precaution.
- Up to 20% production losses reported on Italian orchards.
- NZ environment considered favourable for establishment.



Risk Months: Nov – Mar  
I can enter NZ hiding on:



## YELLOW SPOTTED STINK BUG

- Large stink bugs with distinctive yellow markings. Adults are about the size of a 20c coin.
- Attacks more than 50 host species, including kiwifruit.
- Feeding damage can result in significant fruit loss, similar to BMSB.
- Known hitchhiker pest which can arrive on shipping containers, cars, and machinery.



Risk Months: Sep – Apr  
I can enter NZ on:



## INVASIVE PHYTOPHTHORAS

- Known as the plant killers – a group of significant plant pathogens and a major threat to all plant sectors.
- Species have caused significant impacts to kiwifruit offshore. Many other known and unknown species could also cause impacts under certain conditions.
- Easily spread, particularly with plant material movements.
- Can spread in plants showing no symptoms.



Risk Months: Year Round  
I can enter NZ hiding on:



CATCH IT



SNAP IT



REPORT IT

## TO REPORT UNUSUAL PESTS OR DISEASES

CALL THE MPI HOTLINE 0800 80 99 66 OR KVH 0800 665 825

[www.kvh.org.nz](http://www.kvh.org.nz)



# A KIWIFRUIT GROWING COMMUNITY COMMITTED TO BIOSECURITY EXCELLENCE

*We can all keep unwanted pests  
and diseases out of New Zealand.*

Pests and diseases from offshore can cause serious harm to our kiwifruit orchards and businesses, as well as New Zealand's unique environment and primary industries.

That's why KVH works across the kiwifruit industry, with everyone involved in growing and selling New Zealand kiwifruit, to pursue biosecurity resilience for all.

This calendar features our most unwanted pests. Our best chance at keeping them from establishing in our orchards includes surveillance among people who know what to look for and can identify and report them, should they arrive.

By working together, we can help protect New Zealand's kiwifruit industry from unwanted biosecurity risks.

[kvh.org.nz](http://kvh.org.nz) | Tel: 0800 665 825 | Email: [info@kvh.org.nz](mailto:info@kvh.org.nz)



IF YOU COME ACROSS ANY OF THE PESTS FEATURED IN THIS CALENDAR:  
**CATCH IT! SNAP IT! REPORT IT! 0800 80 99 66**

