

**2023
/2024
Calendar**

**We can all keep unwanted pests and
diseases out of New Zealand**

A Tauranga Port Community Committed to Biosecurity Excellence

Photo credit: Chris Parker



Biosecurity New Zealand
Ministry for Primary Industries
Manatū Ahu Matua



**KO TĀTOU
THIS IS US**
Biosecurity protects what you love



Brown Marmorated Stink Bug



Striped antennae

Striped bands on abdomen

I CAN ENTER NZ ON:

I'm larger than NZ shield bugs and around the size of a 10c coin



BROWN MARMORATED STINK BUG

- Eastern USA (greatest risk)
- All other USA
- Europe
- China
- Korea
- Taiwan
- Japan
- Chile



IF YOU COME ACROSS ONE OF THESE:
CATCH IT! SNAP IT! REPORT IT!

0800 80 99 66

Fruit Flies



Queensland
Fruit Fly
6–8mm long



Oriental Fruit Fly
7mm long



Mediterranean
Fruit Fly
6mm long



Larvae in
fruit 2mm
long

We are
all small and
colourful
flies

I CAN ENTER
NZ ON:



FRUIT FLIES

- Australia
- Pacific Islands
- South East Asia
- Mediterranean
- South America
- Africa
- USA



IF YOU COME ACROSS ONE OF THESE:

CATCH IT! SNAP IT! REPORT IT!

0800 80 99 66

Northern Pacific Seastar



Photo credit:
Graham Edgar

Five arms

Pointy and
often upturned
tips

About 24cm
across but can be
twice as large

Photo credit:
Ashley Coutts



Yellow-orange,
often with
purple markings
on top; yellow
underneath



Photo credit:
Biosecurity Tasmania

I CAN ENTER
NZ ON:

FIND ME:

- above water level at low tide
- underwater at high tide
- sheltered harbours and estuaries
 - boat hulls
 - wharves and pontoons



NORTHERN PACIFIC SEA STAR CAN TRAVEL FROM

- Coastal waters of the north-western Pacific Ocean, including Japan, Russia, North China and Korea
- Tasmania and Victoria, Australia



IF YOU COME ACROSS ONE OF THESE:
CATCH IT! SNAP IT! REPORT IT!

0800 80 99 66

Yellow Spotted Stink Bug



Blackish-brown and covered with small yellow spots

SIZE
Up to 23mm long

I'm larger than NZ shield bugs and around the size of a 10c coin

I CAN ENTER NZ ON:



YELLOW SPOTTED STINK BUG

– Japan – China – Vietnam – Taiwan



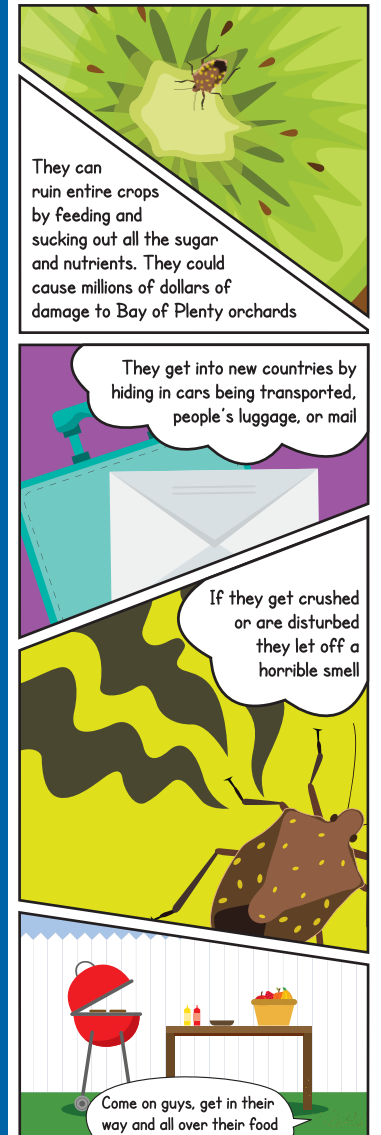
IF YOU COME ACROSS ONE OF THESE:
CATCH IT! SNAP IT! REPORT IT!

0800 80 99 66

December / 23

A Tauranga port community committed to biosecurity excellence

MONDAY	TUESDAY	WEDNESDAY	THURSDAY	FRIDAY	SATURDAY	SUNDAY
27	28	29	30	1	2	3
4 • Westland Anniversary	5	6	7	8	9	10
11	12	13	14	15	16	17
18	19	20 • Term 4 ends no later than 20 Dec	21	22	23	24 • Christmas Eve
25 • Christmas Day	26 • Boxing Day	27	28	29	30	31 • New Year's Eve



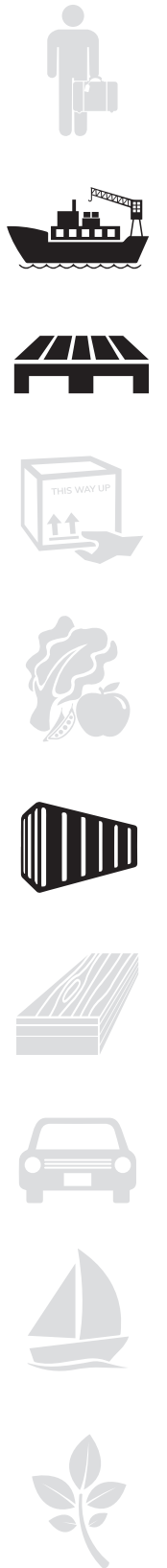
**KO TĀTOU
THIS IS US**
Biosecurity protects what you love

BIOSECURITY THREAT CHART

HIGH-RISK ENTRY MONTHS	JAN	FEB	MAR	APR	MAY	JUN	JUL	AUG	SEP	OCT	NOV	DEC
Northern Giant Hornet												
Asian Paddle Crab												
Spotted Lanternfly												
Exotic Caulerpa Seaweeds												
Japanese Sawyer Beetle												
Invasive Ants												
Spongy Moth												
Giant African Snail												
Brown Marmorated Stink Bug												
Fruit Flies												
Northern Pacific Seastar												
Yellow Spotted Stink Bug												

Northern Giant Hornet

a few years ago on a cargo ship



I CAN ENTER NZ ON:

Light orange head

Orange and brown/black striped body

Stinger is just over a cm long



0 cm

3.5cm

5 cm

Queens can be bigger than 5 cm



- NORTHERN GIANT HORNET CAN TRAVEL FROM
- Japan
 - South Korea
 - Taiwan
 - China
 - North America



IF YOU COME ACROSS ONE OF THESE:
CATCH IT! SNAP IT! REPORT IT!

0800 80 99 66

Asian Paddle Crab

Hard upper shell up to 12cm wide

Six prominent spines on each side of the hard upper shell

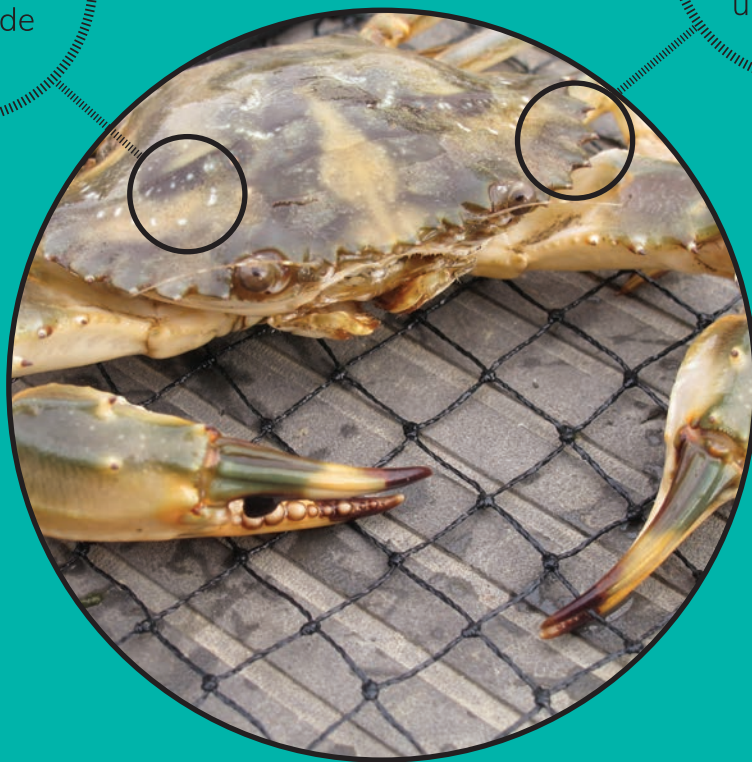


Photo credit: Serena Cox, NIWA.
Colour: low tide
from seawater and mud
pale green, changes to a deep chestnut
• coastal habitats

I CAN ENTER NZ ON:

FIND ME:

- low tide
- sand and mud
- estuaries
- harbours
- coastal habitats



Photo credit:
Serena Cox, NIWA.



ASIAN PADDLE CRAB
– Auckland – Northland

i A few years ago two were caught in the Tauranga Harbour near the Matapihi rail bridge - there's now a trapping programme to monitor for them.



IF YOU COME ACROSS ONE OF THESE:
CATCH IT! SNAP IT! REPORT IT!

0800 80 99 66

Spotted Lanternfly

Adult are up to 2.5cm long and 1.2cm wide.

3 cm

0 cm



Grey forewing with black spots



Hind wings have red and black patches

Yellow abdomen with black bands

I CAN ENTER NZ ON:



Photo credit:
Pennsylvania Department of Agriculture.



LANTERNFLY CAN TRAVEL FROM

- China
- India
- Vietnam
- Korea
- USA



IF YOU COME ACROSS ONE OF THESE:
CATCH IT! SNAP IT! REPORT IT!

0800 80 99 66

Exotic Caulerpa Seaweeds

Invasive and forms vast, dense beds that smother everything - including kaimoana sources

Fronds or leaves up to 10cm long



Can grow from a small fragment and spread rapidly in just a few weeks



I CAN ENTER
NZ ON:



EXOTIC CAULERPA SEaweeds

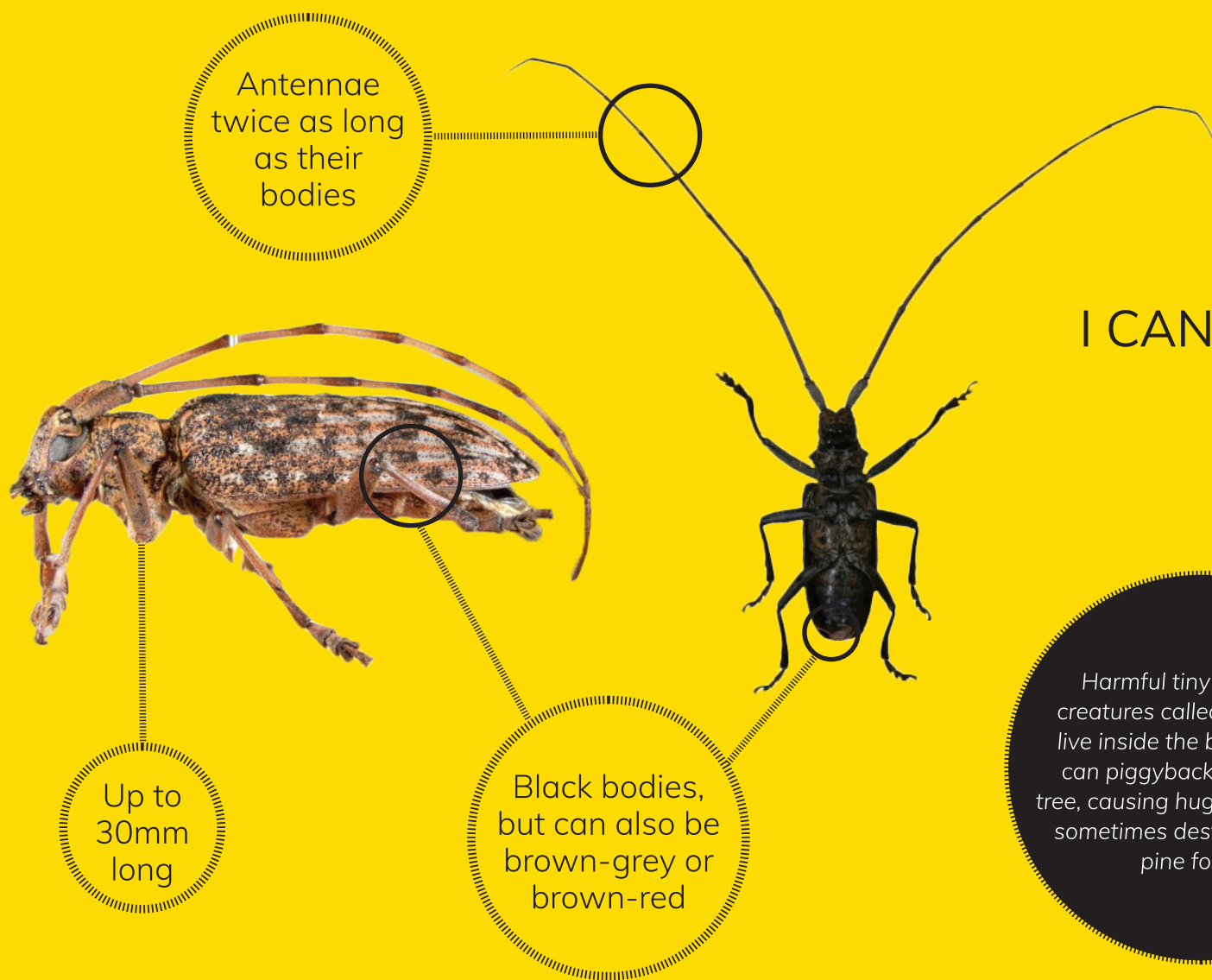
- Great Barrier Island
- Great Mercury Island
- Bay of Islands
- Kawau Island



IF YOU COME ACROSS IT **DON'T TOUCH IT!**
TAKE A PHOTO, RECORD ITS LOCATION, AND REPORT IT!

0800 80 99 66

Japanese Sawyer Beetle



JAPANESE SAWYER BEETLE CAN TRAVEL FROM

- Japan
- China
- Taiwan
- Korea
- Laos
- Vietnam



IF YOU COME ACROSS ONE OF THESE:

CATCH IT! SNAP IT! REPORT IT!

0800 80 99 66

Invasive Ants



Red Imported
Fire Ant
3–6mm long

Reddish-
brown
in colour

Shiny
abdomen

Look out for
any unusual
ants

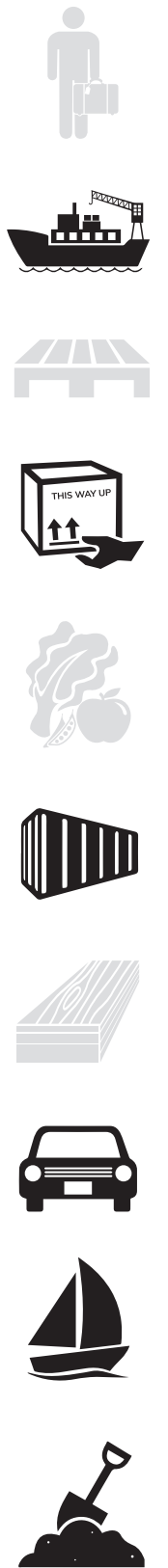
I CAN ENTER
NZ ON:



Yellow Crazy Ant
4–5mm long



Carpenter Ant
Up to 13mm long



INVASIVE ANTS

– Australia – North America – South America



IF YOU COME ACROSS ONE OF THESE:
CATCH IT! SNAP IT! REPORT IT!

0800 80 99 66

Spongy Moth



LOOK OUT FOR EGG MASSES ON:

Formerly known as the Asian Gypsy Moth



SPONGY MOTH CAN TRAVEL FROM
– China – Japan – Russia – South Korea



IF YOU COME ACROSS ONE OF THESE:
CATCH IT! SNAP IT! REPORT IT!

0800 80 99 66

Giant African Snail



You will recognise me by my size, I am huge... 10-20cm!

I CAN ENTER NZ ON:



GIANT AFRICAN SNAIL CAN TRAVEL FROM

- Pacific Islands
- South East Asia
- China
- India
- Sri Lanka
- Brazil
- Caribbean
- West Africa
- Mauritius
- Seychelles
- Réunion Island



IF YOU COME ACROSS ONE OF THESE:
CATCH IT! SNAP IT! REPORT IT!

0800 80 99 66

BIOSECURITY EXCELLENCE AT PORT OF TAURANGA

*Everyone who works in and
around the Port plays a part in
keeping unwanted pests and
diseases out of New Zealand.*

Pests and diseases from offshore can cause serious harm to New Zealand's unique environment and primary industries; and the Port of Tauranga is one of many ways in which they can enter.

That's why the Port of Tauranga is working with other key organisations to pursue 'biosecurity excellence at the Port' – an award winning initiative to lift biosecurity protection at the Port and its transitional facilities through a partnership approach between Port staff, associated industries and government.

This partnership explores opportunities to innovate and strengthen the current screening and inspection programmes at the Port of Tauranga and progresses initiatives to reduce biosecurity risks.

This calendar features 12 of our most unwanted pests that could potentially enter through the Port of Tauranga. Our best chance at keeping them out includes surveillance among people who know what to look for and can identify and report these pests, should they arrive.

Transitional facilities and associated industries such as transporters and other logistical organisations can provide vital assistance with this surveillance.

By working together, we can help protect New Zealand's environment and primary industries from unwanted biosecurity risks.



IF YOU COME ACROSS ANY OF THE PESTS FEATURED IN THIS CALENDAR:
CATCH IT! SNAP IT! REPORT IT! 0800 80 99 66



Biosecurity New Zealand
Ministry for Primary Industries
Manatū Ahu Matua



**KO TĀTOU
THIS IS US**
Biosecurity protects what you love

