

The Ministry for Primary Industries
Border Clearance Services, Operations

Presentation for
Kiwi Fruit Vine Health

Steve Gilbert, Director

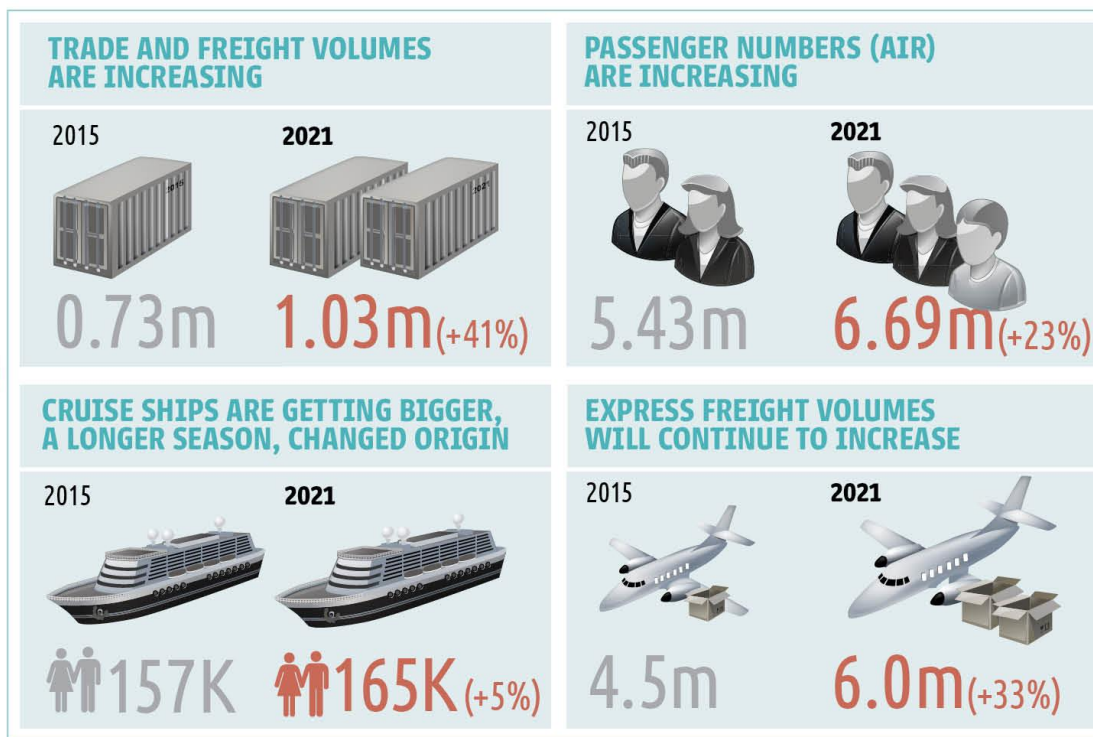
JULY 2015



Environmental Scan

OUR WORLD IS RAPIDLY EVOLVING, AND WE NEED TO ADAPT TO IT...

- ONGOING FTA AGREEMENTS
- INCREASING INTERNET SHOPPING
- MORE TRADED GOODS MOVING AROUND THE WORLD FASTER
- GLOBAL POPULATION IS GROWING AND GETTING RICHER
- CLIMATE CHANGE PRESENTS SIGNIFICANT THREATS TO BIOSECURITY
- PUBLIC EXPECTATIONS ON BIOSECURITY ARE INCREASING
- GROWTH OF THE DAIRY INDUSTRY



- LIMITED PRE-BORDER OPPORTUNITIES IN EXPRESS FREIGHT
- PHYSICAL CONSTRAINTS AT AIRPORTS AND PORTS
- GROWTH OF INLAND PORTS
- THE INBOUND PASSENGER DEMOGRAPHIC IS CHANGING
- MORE CARGO INSPECTIONS WITH GROWING COMMODITY THREAT COMPLEXITY



The Risks *are real*

Since 1st January 2014 detected at the Border

20 alive Queensland fruit flies

- Passenger
- Air Cargo



Auckland &
Christchurch

26 Live Brown Marmorated Stink Bugs

- Passenger
- Cargo
(timber, personal effects,
vehicle & containers)
- Yachts
- Approximately 250 dead



Auckland,
Tauranga,
Nelson &
Timaru

The GIA Relationship *is critical*

Key successes



The level of effort & intensity *is increasing*



The Border Clearance Levy

Effective 1 December 2015

\$15.20 to \$15.90 for arriving air passenger

\$19.00 to \$19.70 for arriving cruise passenger

**Provides a revenue base for funding increasing
passenger numbers**



Your Support is Appreciated

