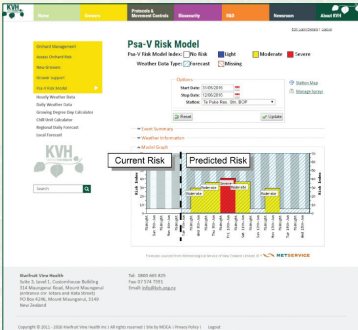


KVH UPDATE

NEW PSA-V RISK MODEL

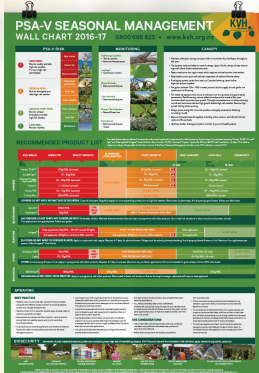
The Psa-V Risk Model has undergone significant improvements. The new model is now hosted by HortPlus and is not only more cost-effective, but it also offers several improvements for kiwifruit growers. Benefits of the new Psa-V Risk Model include:

- **receiving data from more weather stations** so growers can select the weather station closest to their orchard;
- **display historical infection risk data**, providing growers with the ability to review past infection risk (e.g. over the last season) to evaluate how well a control programme worked; and
- **incorporate new information** about the effect of temperature on Psa infection risk sourced from overseas data.



Users will also have access to a number of additional tools. These include a customisable chill unit calculator and customisable growing degree day calculator. They can both plot up to five combinations of weather station locations and seasons. Growers can choose the start and stop date to define the period of interest. Although these tools are not directly related to Psa management, KVH believes they will add real value for growers looking to better understand the impact of weather on their vines.

View the new model at: www.kvh.org.nz/psa_risk_model



MANAGING PSA-V PRODUCT RESISTANCE

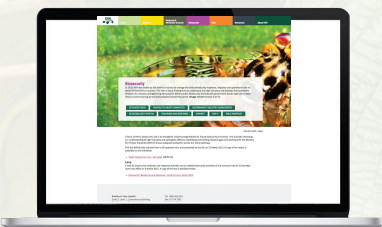
An ongoing resistance monitoring programme has identified both streptomycin and copper resistant strains of Psa on a small number of orchards. KVH works closely with the science community to establish strategies to minimise the risk associated with these strains. KVH has developed a best practice guide for growers to minimise the risk of resistance and tolerance developing, and a Protocol for orchards showing signs of resistance or tolerance. Product testing research continues to focus both on new products and better use of existing products.

For more info: www.kvh.org.nz/spray_info

NEW KVH WEBSITE

Early this month KVH launched its new and improved website. While the overall look and feel of the website will remain familiar to users, the refreshed website is designed to be more user-friendly, visually more appealing and easier to navigate. Key changes include more imagery, the latest information and news displayed on the homepage and quick-access buttons for all audiences. KVH is keen to hear your feedback about the new-look website.

Visit: www.kvh.org.nz **Send your feedback to:** info@kvh.org.nz



NPMP REVIEW

KVH is undertaking an internal review of the National Psa-V Pest Management Plan (NPMP) to ensure the Plan remains effective going forward and to identify improvements to align with ongoing changes within the industry. The review will include consultation with industry and any agreed changes will be communicated to growers and the industry.



KIWIFRUIT PLANT CERTIFICATION SCHEME

On 1 October 2016 new conditions around buying and selling kiwifruit plants will come into effect when the Kiwifruit Plant Certification Scheme (KPCS) is fully implemented. This means only KPCS-certified kiwifruit plants may be bought or sold after this date; and these plants are still subject to KVH movement controls. However, growers will still be able to 'grow for their own use' up to 1000 kiwifruit plants for movement between their own properties within the same Psa-V region. It is important growers are not only aware of their options from 1 October, but they also need to order kiwifruit plants for the upcoming season well in advance (at least one year) to enable nurseries to anticipate demand.

For more info: www.kvh.org.nz/kpcs



FRUIT FLY OPERATIONAL AGREEMENT

On 9 May 2016 Kiwifruit Vine Health (KVH) signed the Operational Agreement (OA) for fruit flies on behalf of the kiwifruit industry—a significant milestone to further improve biosecurity readiness and response activities for fruit flies and the first such agreement under the Government Industry Agreements (GIA) partnership. The OA sets out the operational requirements for readiness and response activities for fruit flies and importantly, enables joint decision making and also clarifies cost-sharing arrangements between government and affected industries. A work programme to improve trapping and responses is being developed.

For more info: www.kvh.org.nz/readiness_response



BROWN MARMORATED STINK BUG (BMSB)

BMSB is a major focus for MPI and all horticultural industries. Significant efforts are being put into keeping this pest out, but also preparing should it arrive. KVH represents the kiwifruit industry as part of MPI's "BMSB network" which includes other GIA signatories and industry organisations. KVH's involvement in these activities includes the following:

- **Developing a response framework under GIA.**
KVH recently took part in an all-of-Government response exercise on BMSB to assess strategic risks associated with response options. We are also working with government to progress cost shares under GIA.
- **Research efforts to mitigate risk and impact of BMSB.**
KVH is part of a research group that overviews the R&D focus and priorities. Three priorities are developing effective traps and pheromones, ACVM approval of effective control sprays and assessing biological control options.
- **Communications to raise public awareness and early detection.**
KVH co-funds a BMSB public awareness campaign with MPI and other GIA partners to increase early detection through passive surveillance. This campaign was a success, resulting in a significant increase in suspect BMSB finds, particularly in the Bay of Plenty. We are also strengthening awareness amongst the kiwifruit industry, associated industries such as the Port of Tauranga and the freight and logistics sector and also with members of the public.
- **Advocating for tighter measures to reduce the likelihood of entry.**
KVH is working with other sectors and MPI to ensure risks from imported goods are being managed.

UPCOMING ANNUAL GENERAL MEETING

KVH will hold its 2016 AGM on Wednesday 31 August from 9.30am at ASB Arena, Tauranga. This year three grower Directors for the Board will be nominated and elected by KVH members and chairman Peter Ombler has indicated he will stand down after a three year tenure.