

A TAURANGA PORT COMMUNITY COMMITTED TO BIOSECURITY EXCELLENCE

2020 CALENDAR

Everyone plays a part in keeping unwanted
pests and diseases out of New Zealand

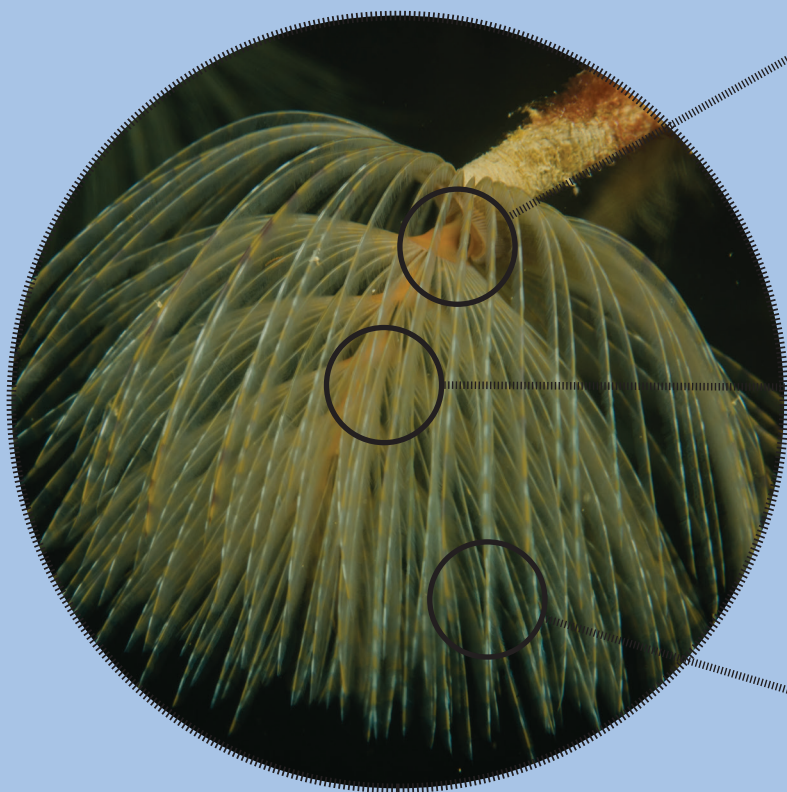
Photo credit: Chris Parker



Biosecurity New Zealand
Ministry for Primary Industries
Manatū Ahu Matua



MEDITERRANEAN FANWORM



Brown-grey tube,
10-50cm long

Single spiral of
slender threads
comes out of
the tube

Yellow-orange
spiral, made of
bands of white,
yellow and
brown

Photo credit:
Crispin Middleton, NIWA.

I CAN ENTER
NZ ON:

FIND ME:

- low tide
- sheltered harbours
- boat hulls
- wharves
- pontoons



MEDITERRANEAN FANWORM

– Auckland

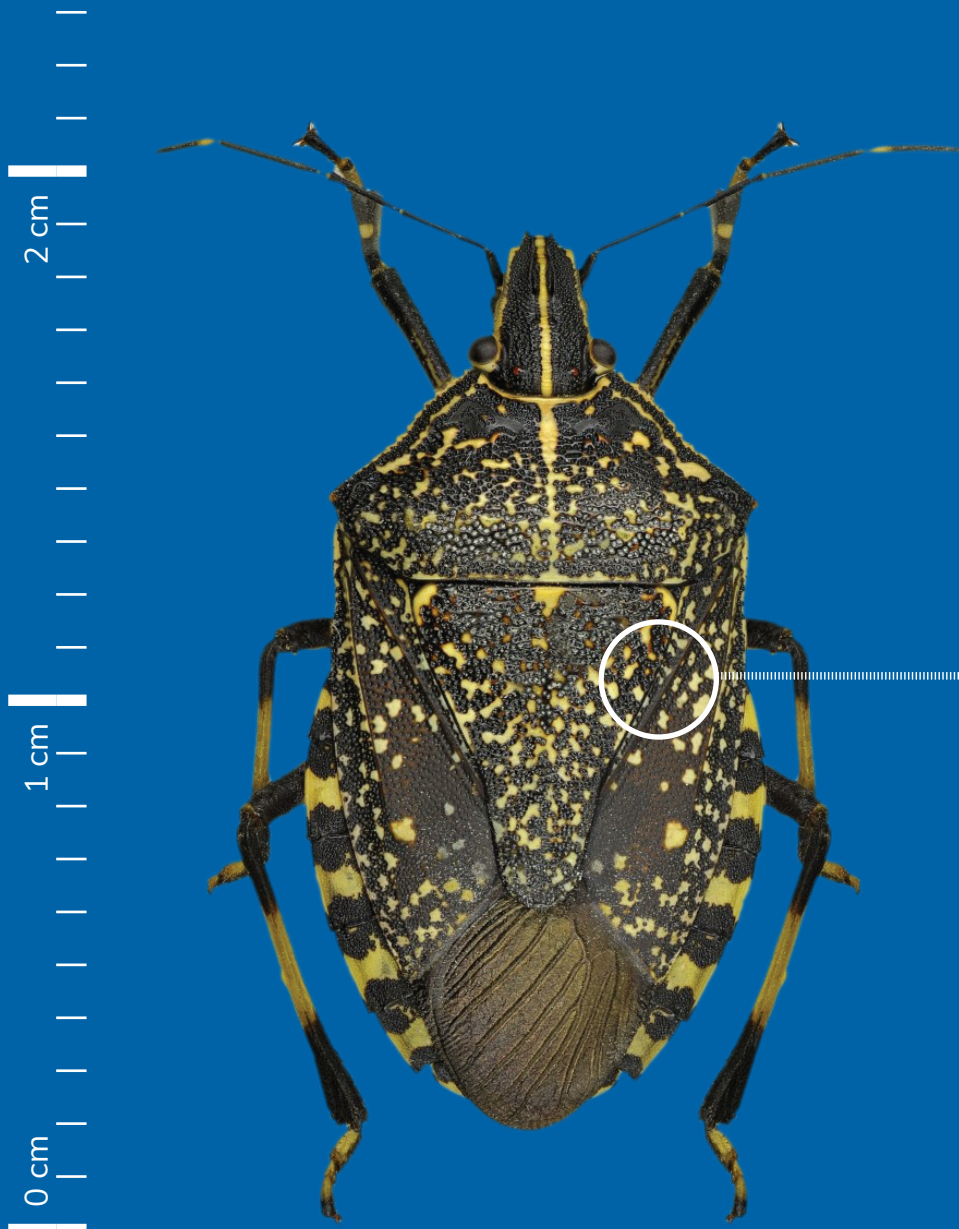
– Northland



IF YOU COME ACROSS ONE OF THESE:
CATCH IT! SNAP IT! REPORT IT!

0800 80 99 66

YELLOW SPOTTED STINK BUG



Blackish-brown and covered with small yellow spots

SIZE
Up to 23mm long

I CAN ENTER NZ ON:

I'm larger than NZ shield bugs and around the size of a 10c coin



YELLOW SPOTTED STINK BUG

– Japan – China – Vietnam – Taiwan



IF YOU COME ACROSS ONE OF THESE:
CATCH IT! SNAP IT! REPORT IT!

0800 80 99 66

DECEMBER / 19

A Tauranga port community committed to biosecurity excellence

MONDAY	TUESDAY	WEDNESDAY	THURSDAY	FRIDAY	SATURDAY	SUNDAY
25	26	27	28	29	30	1
2 • Chatham Island Anniversary • Westland Anniversary	3	4	5	6	7	8
9	10	11	12	13	14	15
16	17	18	19	20	21	22
23	24 • Christmas Eve	25 • Christmas Day	26 • Boxing Day	27	28	29
30 • New Year's Eve	31	1	2	3	4	5

They can ruin entire crops by feeding, sucking out all the sugar and nutrients. They could cause millions of dollars of damage to Bay of Plenty orchards

They get into new countries by hiding in cars being transported, people's luggage, or mail

If they get crushed or are disturbed they let off a horrible smell

Come on guys, get in their way and all over their food

KO TĀTOU
THIS IS US BIOSECURITY 2025

BIOSECURITY THREAT CHART

HIGH-RISK ENTRY MONTHS	JAN	FEB	MAR	APR	MAY	JUN	JUL	AUG	SEP	OCT	NOV	DEC
Nun Moth												
Asian Paddle Crab												
Spotted Lanternfly												
Bark Beetles												
Ambrosia Beetle												
Invasive Ants												
Asian Gypsy Moth												
Giant African Snail												
Brown Marmorated Stink Bug												
Fruit Flies												
Mediterranean Fanworm												
Yellow Spotted Stink Bug												

NUN MOTH



MALE
Feathery antennae



FEMALE
Hairy, stout body



Egg Mass

LOOK OUT FOR EGG MASSES ON:

Especially found on pine



0 cm

5 cm



NUN MOTH CAN TRAVEL FROM
– Europe

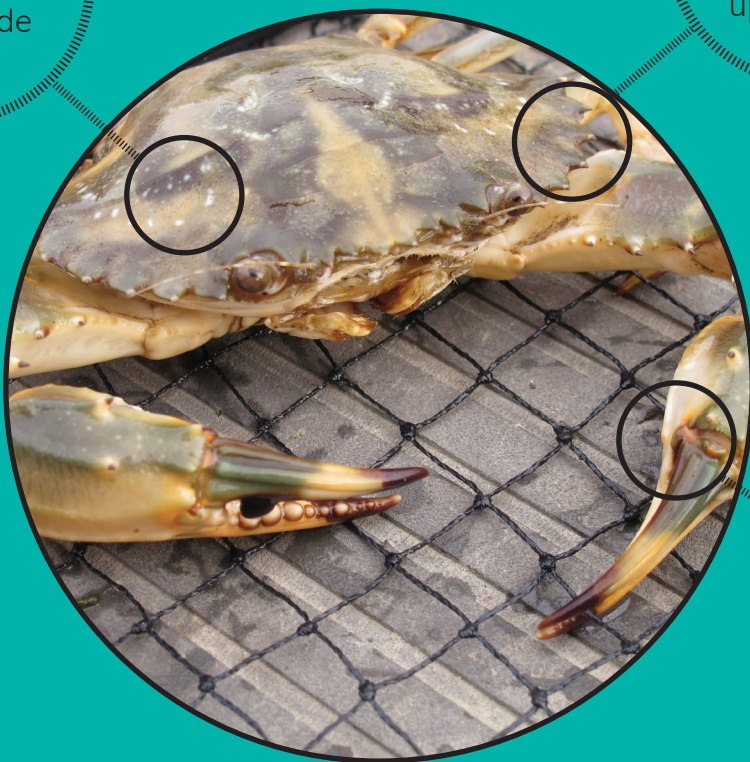


IF YOU COME ACROSS ONE OF THESE:
CATCH IT! SNAP IT! REPORT IT!

0800 80 99 66

ASIAN PADDLE CRAB

Hard upper
shell up to
12cm wide



Six prominent
spines on each
side of the hard
upper shell

Can be coloured
from off-white and
pale green, through
to a deep chestnut
brown

I CAN ENTER
NZ ON:

FIND ME:

- low tide
- sand and mud
- estuaries
- harbours
- coastal habitats



Photo credit:
Serena Cox, NIWA.



ASIAN PADDLE CRAB
– Auckland – Northland



IF YOU COME ACROSS ONE OF THESE:
CATCH IT! SNAP IT! REPORT IT!

0800 80 99 66

SPOTTED LANTERNFLY

Adult is up to 2.5cm long
and 1.2cm wide.

3 cm

0 cm

Grey
forewing with
black spots



Hind wings
have red
and black
patches

Yellow
abdomen
with black
bands

I CAN ENTER
NZ ON:



Photo credit:
Pennsylvania Department of Agriculture.



LANTERNFLY CAN TRAVEL FROM

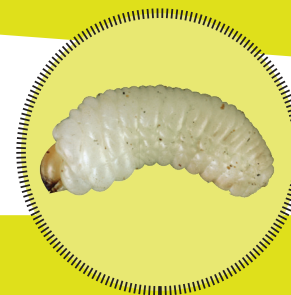
- China
- India
- Vietnam
- Korea
- USA



IF YOU COME ACROSS ONE OF THESE:
CATCH IT! SNAP IT! REPORT IT!

0800 80 99 66

BARK BEETLES



Larvae



ADULT

Same size as a grain of rice

Black cylinder shaped body

I CAN ENTER NZ ON:

Especially found on pine



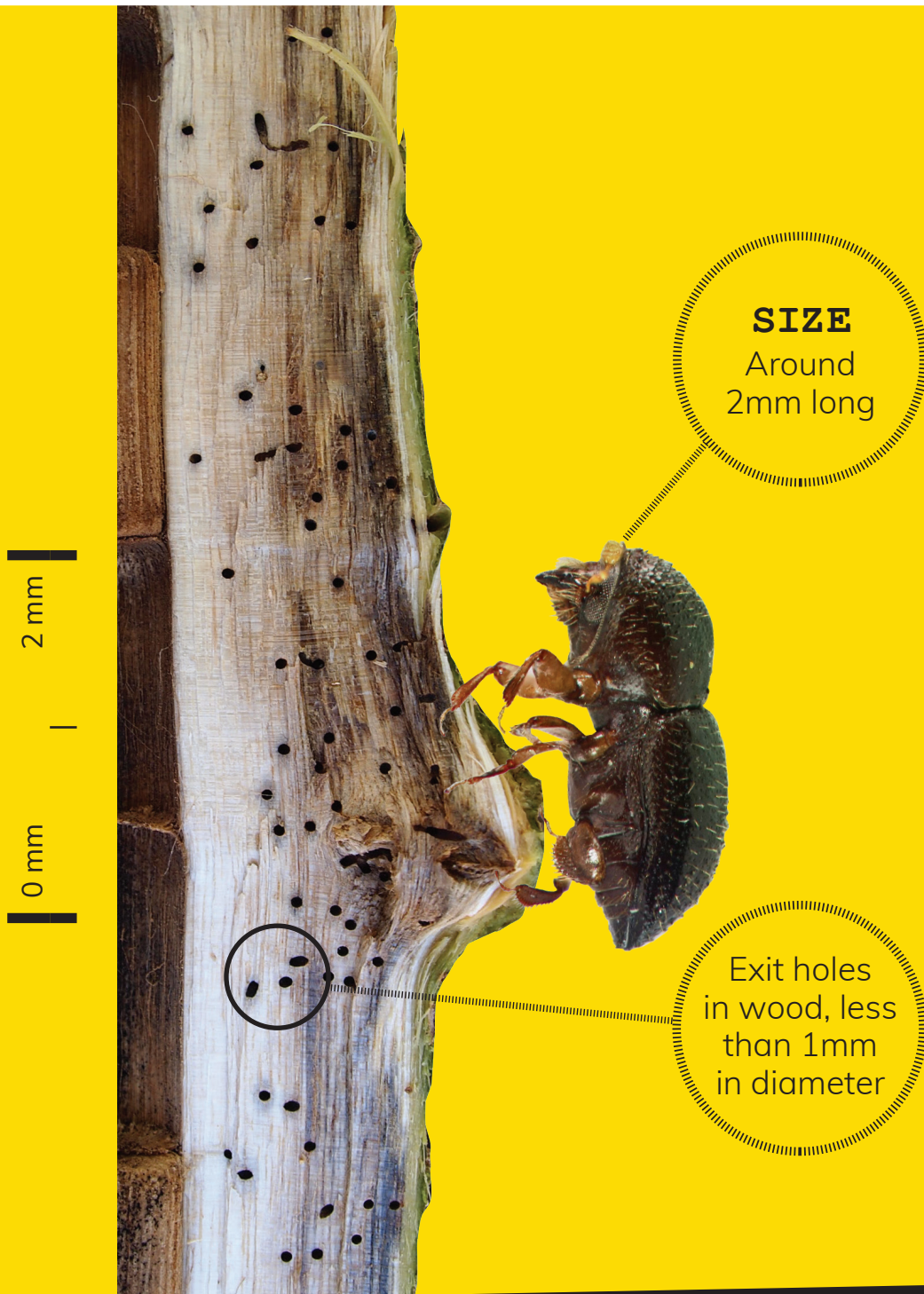
BARK BEETLES CAN TRAVEL FROM
– Australia – North America – Europe



IF YOU COME ACROSS ONE OF THESE:
CATCH IT! SNAP IT! REPORT IT!

0800 80 99 66

AMBROSIA BEETLE



I CAN ENTER
NZ ON:



AMBROSIA BEETLE CAN TRAVEL FROM

– USA – Europe – Central America – Some Pacific Islands – Africa



IF YOU COME ACROSS ONE OF THESE:
CATCH IT! SNAP IT! REPORT IT!

0800 80 99 66

INVASIVE ANTS



Red Imported
Fire Ant
3–6mm long

Reddish-
brown
in colour

Shiny
abdomen

Look out for
any unusual
ants

I CAN ENTER
NZ ON:



Yellow Crazy Ant
4–5mm long



Carpenter Ant
Up to 13mm long



INVASIVE ANTS

– Australia – North America – South America



IF YOU COME ACROSS ONE OF THESE:
CATCH IT! SNAP IT! REPORT IT!

0800 80 99 66

ASIAN GYPSY MOTH



MALE
30–40mm
wingspan

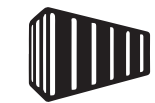


FEMALE
90mm
wingspan



Egg Mass

LOOK OUT
FOR EGG
MASSES ON:



ASIAN GYPSY MOTH CAN TRAVEL FROM
– China – Japan – Russia – South Korea



IF YOU COME ACROSS ONE OF THESE:
CATCH IT! SNAP IT! REPORT IT!

0800 80 99 66

GIANT AFRICAN SNAIL



You will recognise me by my size, I am huge... 10-20cm!

I CAN ENTER NZ ON:



GIANT AFRICAN SNAIL CAN TRAVEL FROM

- Pacific Islands
- South East Asia
- China
- India
- Sri Lanka
- Brazil
- Caribbean
- West Africa
- Mauritius
- Seychelles
- Réunion Island



IF YOU COME ACROSS ONE OF THESE:
CATCH IT! SNAP IT! REPORT IT!

0800 80 99 66

BROWN MARMORATED STINK BUG



Striped antennae

Striped bands on abdomen

I CAN ENTER NZ ON:

I'm larger than NZ shield bugs and around the size of a 10c coin



BROWN MARMORATED STINK BUG

- Eastern USA (greatest risk)
- All other USA
- Europe
- China
- Korea
- Taiwan
- Japan
- Chile



IF YOU COME ACROSS ONE OF THESE:
CATCH IT! SNAP IT! REPORT IT!

0800 80 99 66

FRUIT FLIES



Queensland
Fruit Fly
6–8mm long



Oriental Fruit Fly
7mm long



Mediterranean
Fruit Fly
6mm long



Larvae in
fruit 2mm
long

We are
all small and
colourful
flies

I CAN ENTER
NZ ON:



FRUIT FLIES

- Australia
- Pacific Islands
- South East Asia
- Mediterranean
- South America
- Africa
- USA



IF YOU COME ACROSS ONE OF THESE:
CATCH IT! SNAP IT! REPORT IT!

0800 80 99 66

BIOSECURITY EXCELLENCE AT PORT OF TAURANGA

*Everyone who works in and
around the port plays a part in
keeping unwanted pests and
diseases out of New Zealand.*

Pests and diseases from offshore can cause serious harm to New Zealand's unique environment and primary industries; and the Port of Tauranga is one of many ways in which they can enter.

That's why the Port of Tauranga is working with other key organisations to pursue 'biosecurity excellence at the Port' – an award winning initiative to lift biosecurity protection at the Port and its transitional facilities through a partnership approach between port staff, associated industries and government.

This partnership explores opportunities to innovate and strengthen the current screening and inspection programmes at the Port of Tauranga and progresses initiatives to reduce biosecurity risks.

This calendar features 12 of our most unwanted pests that could potentially enter through the Port of Tauranga. Our best chance at keeping them out includes surveillance among people who know what to look for and can identify and report these pests, should they arrive.

Transitional facilities and associated industries such as transporters and other logistical organisations can provide vital assistance with this surveillance.

By working together, we can help protect New Zealand's environment and primary industries from unwanted biosecurity risks.



IF YOU COME ACROSS ANY OF THE PESTS FEATURED IN THIS CALENDAR:
CATCH IT! SNAP IT! REPORT IT! 0800 80 99 66



Biosecurity New Zealand
Ministry for Primary Industries
Manatū Ahu Matua

