

Proposed new Pathway Management Plan

Fact sheet: Kiwifruit orchard biosecurity plans



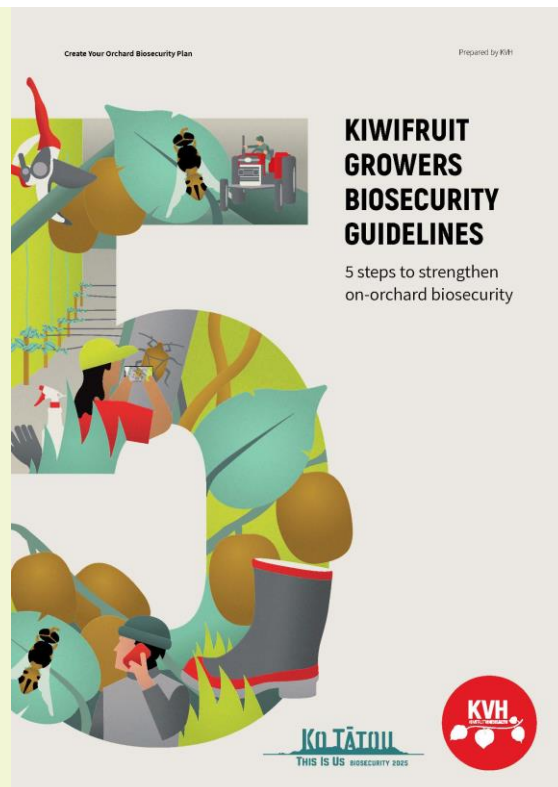
Long term growth and success of the kiwifruit industry requires biosecurity risks to be managed across the supply chain. KVH is proposing to introduce a Pathway Management Plan for the kiwifruit industry to prevent the spread of pests and diseases before we know they are here. This will give us the best possible chance of eradication and minimising the impact to our industry.

Our approach to risk management focuses on six improvement areas. If we can manage risk across these areas, we will be a long way towards protecting our investments from future biosecurity risk. This is one of a series of fact sheets available at www.kvh.org.nz, along with more detailed information and frequently asked questions that explain the implications of changes in these key improvement areas.

What is being proposed?

The Pathway Plan is grower centric. It serves to protect your kiwifruit investments from biosecurity threats by creating a framework to better manage risk across kiwifruit pathways into orchards. While the Plan consists of 10 rules it is the requirement for growers to have and operate in accordance with a Kiwifruit Orchard Biosecurity Plan that consolidates these rules and is instrumental in creating an industry that is resilient to biosecurity threats. By practicing better biosecurity on-orchard, growers can reduce or eliminate the impacts of pests on-orchard and prevent their arrival and spread. This reduces the risk of direct financial impacts on the individual grower, as well as reducing potential impacts of biosecurity events on the industry. In practical terms, effective biosecurity on-orchard involves a Grower:

- Understanding the orchard-specific biosecurity risks
- Agreeing what must happen on the orchard (including establishing and ensuring biosecurity requirements to be met by people visiting the orchard)
- Sourcing and tracing clean plant material
- Checking and cleaning other risk items (e.g., tools, vehicles, machinery, bins, footwear and clothing), and
- Reporting.



What are the changes and what do they mean for me?

Orchard biosecurity plans are not new. There is currently a requirement under the National Psa-V Pest Management Plan (NPMP) for growers to have an orchard management plan for Psa-V. This requirement is proposed to be broadened to manage risk associated with a broader range of threats. KVH has already introduced the template “Kiwifruit Growers Biosecurity Guidelines” which is aligned with the new requirements of the Pathway Plan and serves as an easy option to meet the requirements of this rule. About 15% of growers have already completed these guidelines, and for these growers no additional changes would be required. Others would need to dedicate some time to work through the guidelines and identify how they will manage on-orchard risks. Support to complete these guidelines will be available from KVH and through the usual industry channels, including dedicated workshops that KVH can hold in the transition period to 1 April 2022 when the Plan would be fully implemented. Implementation of orchard plans will be further simplified through expanded certification (e.g., for orchard contractors and all kiwifruit plant material), assisting growers to identify where good biosecurity has been followed (for inputs and service providers).

See the set of rules document on the KVH website for wording and explanation of proposed rules.

Take the opportunity to have your say

KVH is consulting with growers and other industry groups (nurseries and post-harvest for example) about the proposed new Plan. Based on feedback received, the Plan and implementation schedule will be finalised, with changes likely to come in to effect from 1 April 2022. Let us know your thoughts on the proposed Plan by Friday 30 October 2020. Speak to any of the team, send an email to info@kvh.org.nz or phone 0800 665 825.