

A TAURANGA PORT COMMUNITY COMMITTED TO BIOSECURITY EXCELLENCE

2021/22 CALENDAR

Everyone plays a part in keeping unwanted
pests and diseases out of New Zealand

KO TĀTOU
THIS IS US BIOSECURITY 2025

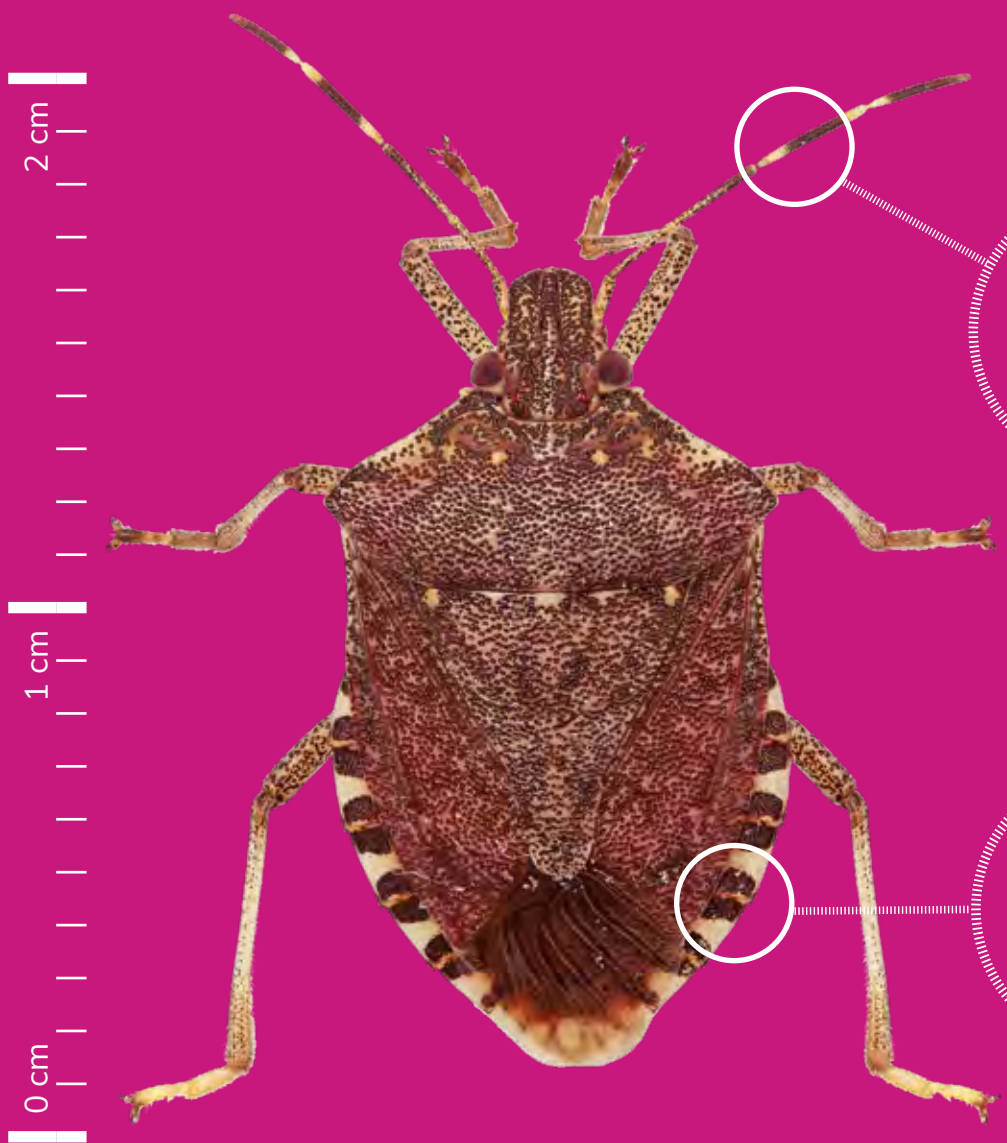
Photo credit: Chris Parker



Biosecurity New Zealand
Ministry for Primary Industries
Manatū Ahu Matua



BROWN MARMORATED STINK BUG

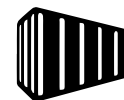


Striped antennae

Striped bands on abdomen

I CAN ENTER NZ ON:

I'm larger than NZ shield bugs and around the size of a 10c coin



BROWN MARMORATED STINK BUG

- Eastern USA (greatest risk)
- All other USA
- Europe
- China
- Korea
- Taiwan
- Japan
- Chile



IF YOU COME ACROSS ONE OF THESE:
CATCH IT! SNAP IT! REPORT IT!

0800 80 99 66

FRUIT FLIES



Queensland Fruit Fly
6–8mm long



Oriental Fruit Fly
7mm long



Mediterranean Fruit Fly
6mm long



Larvae in fruit
2mm long

We are all small and colourful flies

I CAN ENTER NZ ON:



FRUIT FLIES

- Australia
- Pacific Islands
- South East Asia
- Mediterranean
- South America
- Africa
- USA



IF YOU COME ACROSS ONE OF THESE:
CATCH IT! SNAP IT! REPORT IT!

0800 80 99 66

NORTHERN PACIFIC SEASTAR

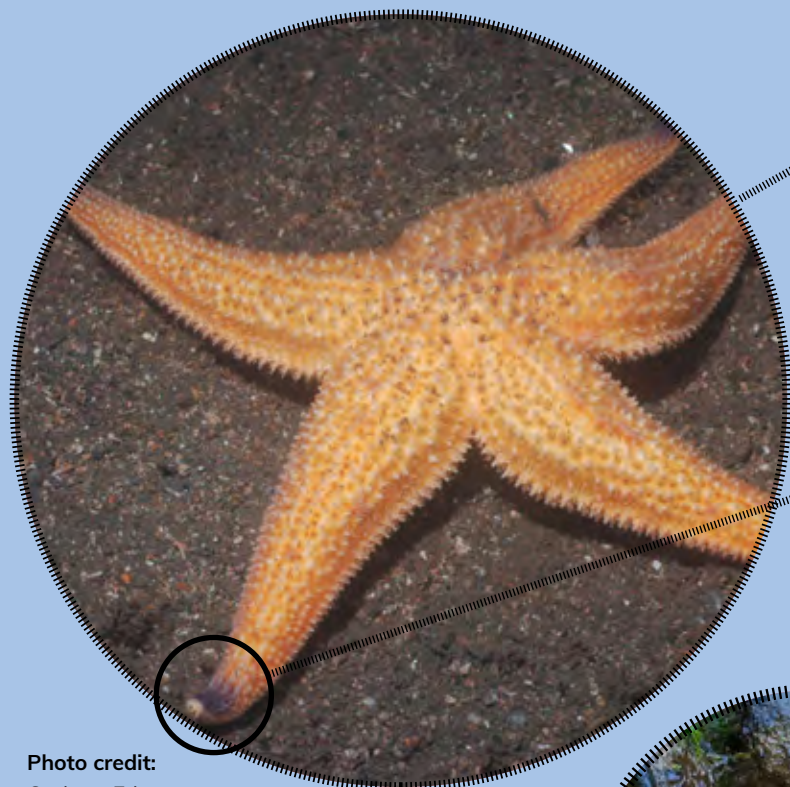


Photo credit:
Graham Edgar

Five arms

Pointy and
often upturned
tips

About 24cm
across but can be
twice as large

Photo credit:
Ashley Coutts



Yellow-orange,
often with
purple markings
on top; yellow
underneath



Photo credit:
Biosecurity Tasmania

I CAN ENTER NZ ON:

FIND ME:

- above water level at low tide
- underwater at high tide
- sheltered harbours and estuaries
 - boat hulls
 - wharves and pontoons



NORTHERN PACIFIC SEA STAR CAN TRAVEL FROM

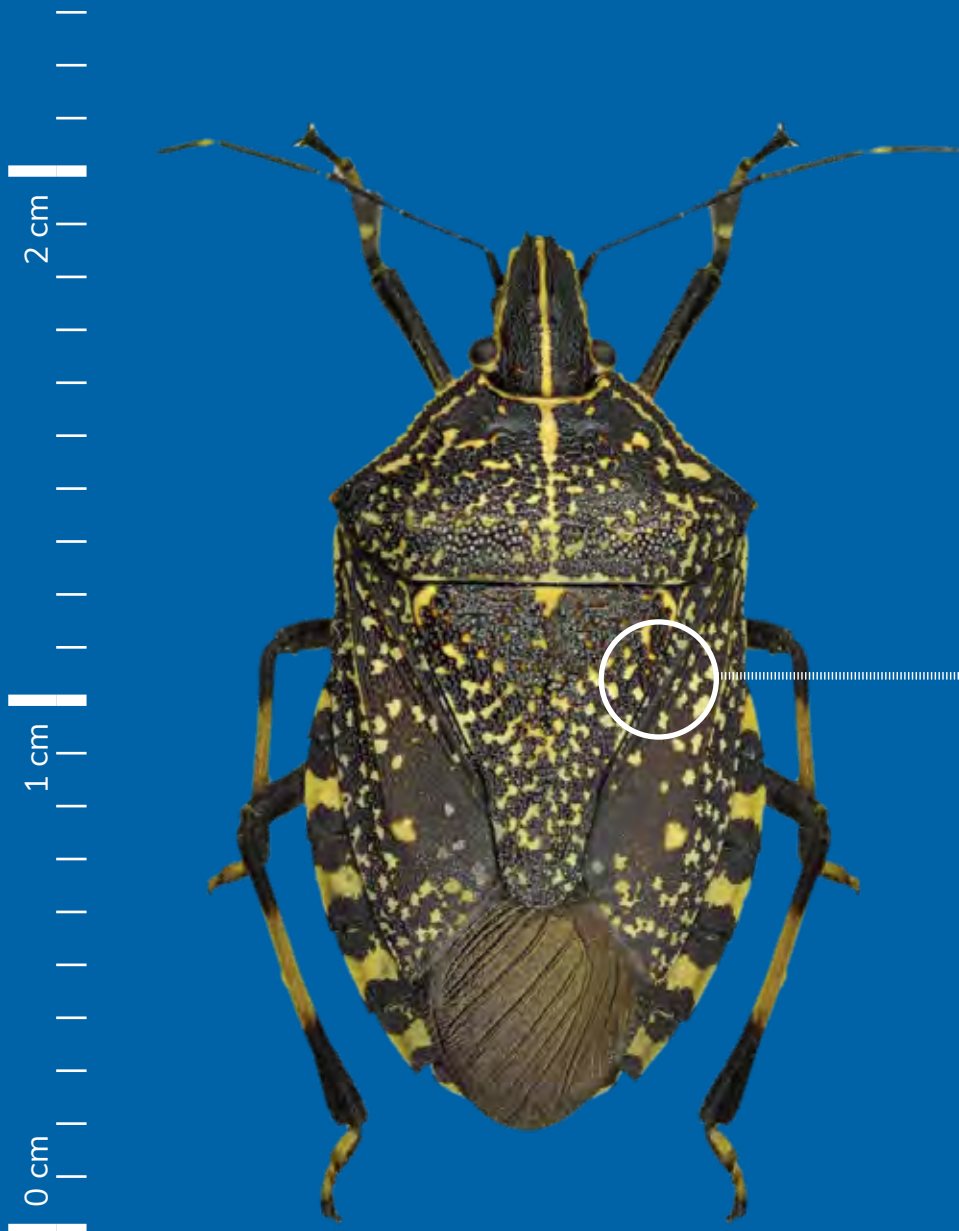
- Coastal waters of the north-western Pacific Ocean, including Japan, Russia, North China and Korea
- Tasmania and Victoria, Australia



IF YOU COME ACROSS ONE OF THESE:
CATCH IT! SNAP IT! REPORT IT!

0800 80 99 66

YELLOW SPOTTED STINK BUG

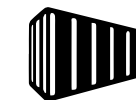


Blackish-brown and covered with small yellow spots

SIZE
Up to 23mm long

I CAN ENTER NZ ON:

I'm larger than NZ shield bugs and around the size of a 10c coin



YELLOW SPOTTED STINK BUG

– Japan – China – Vietnam – Taiwan



IF YOU COME ACROSS ONE OF THESE:
CATCH IT! SNAP IT! REPORT IT!

0800 80 99 66

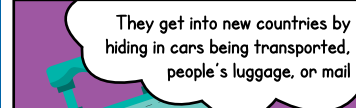
DECEMBER / 21

A Tauranga port community committed to biosecurity excellence

MONDAY	TUESDAY	WEDNESDAY	THURSDAY	FRIDAY	SATURDAY	SUNDAY
29	30	1	2	3	4	5
6	7	8	9	10	11	12
13	14	15	16	17	18	19
20	21	22	23	24	25	26
• Term 4 ends				• Christmas Eve	• Christmas Day	• Boxing Day
27	28	29	30	31	1	2
				• New Year's Eve		



They can ruin entire crops by feeding, sucking out all the sugar and nutrients. They could cause millions of dollars of damage to Bay of Plenty orchards



They get into new countries by hiding in cars being transported, people's luggage, or mail



If they get crushed or are disturbed they let off a horrible smell



Come on guys, get in their way and all over their food

KO TĀTOU

THIS IS US BIOSECURITY 2025

BIOSECURITY THREAT CHART

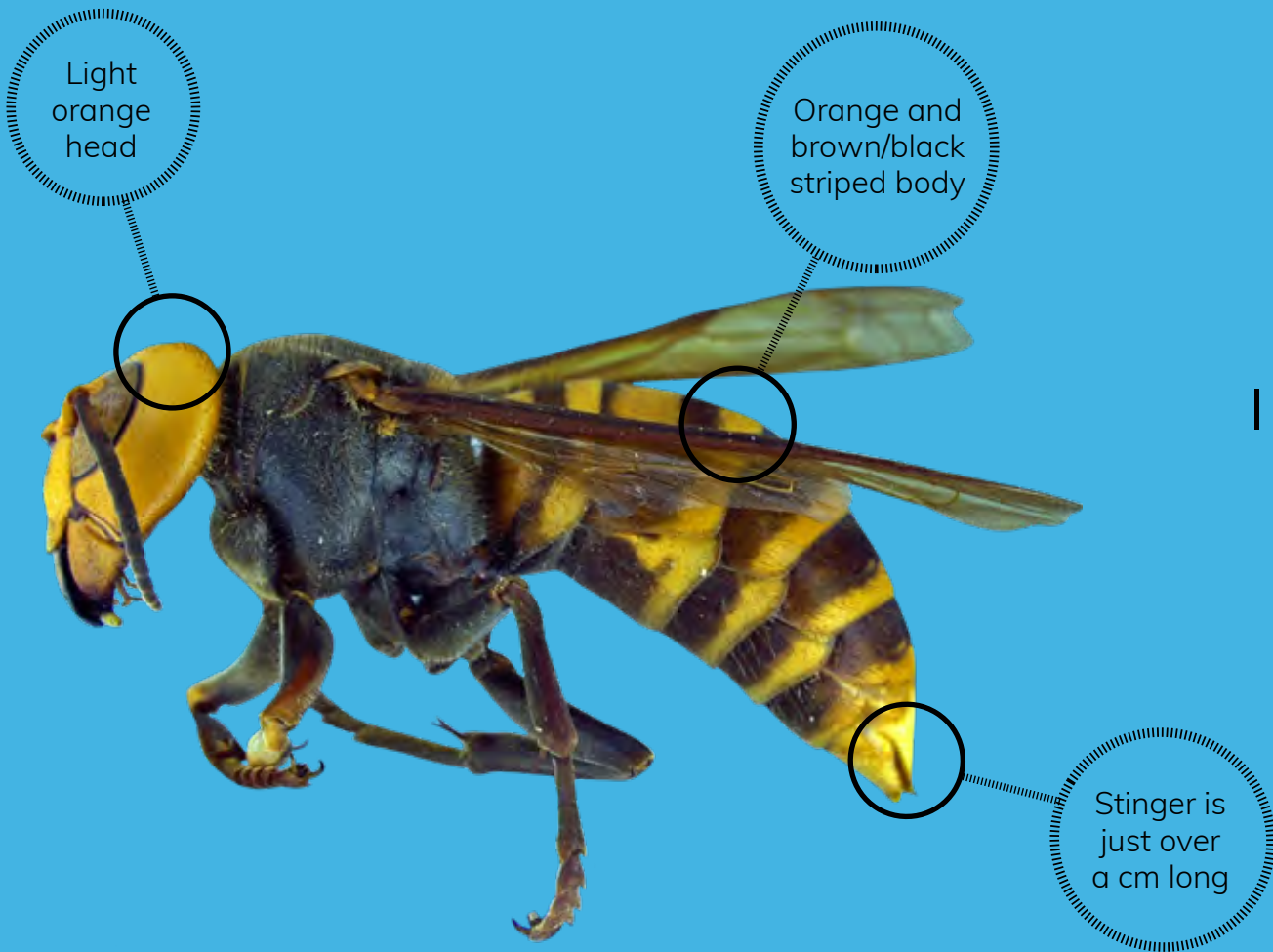
HIGH-RISK ENTRY MONTHS	JAN	FEB	MAR	APR	MAY	JUN	JUL	AUG	SEP	OCT	NOV	DEC
Asian Giant Hornet												
Asian Paddle Crab												
Spotted Lanternfly												
Nun Moth												
Wood-Boring Beetles												
Invasive Ants												
Fall Armyworm												
Giant African Snail												
Brown Marmorated Stink Bug												
Fruit Flies												
Northern Pacific Seastar												
Yellow Spotted Stink Bug												

ASIAN GIANT HORNET

Likely hitched a ride to the US/ Canada recently on a cargo ship



I CAN ENTER NZ ON:



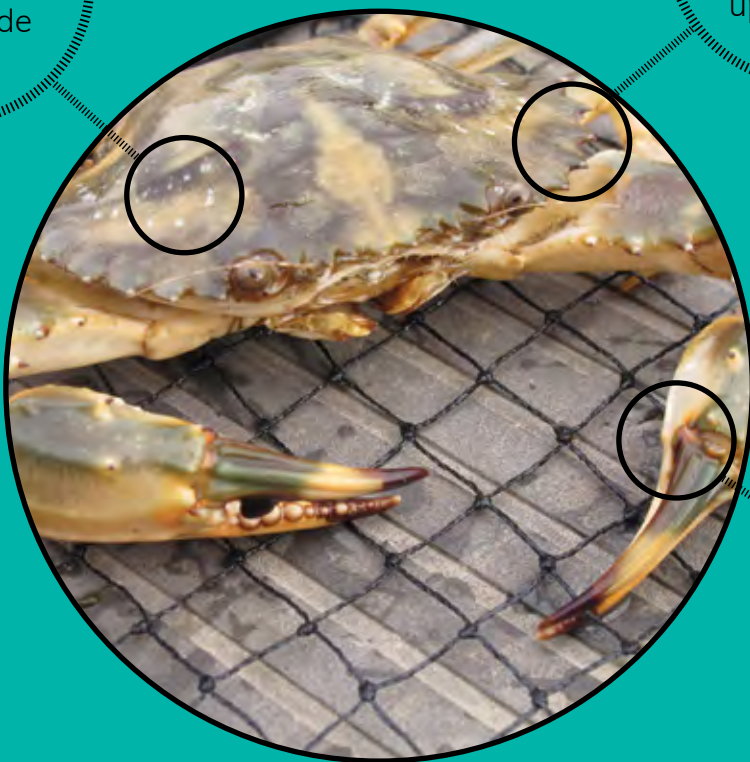
- ASIAN GIANT HORNET CAN TRAVEL FROM
- Japan
 - Taiwan
 - North America
 - South Korea
 - China

! IF YOU COME ACROSS ONE OF THESE:
CATCH IT! SNAP IT! REPORT IT!
0800 80 99 66

ASIAN PADDLE CRAB

Hard upper shell up to 12cm wide

Six prominent spines on each side of the hard upper shell



Can be coloured from off-white and pale green, through to a deep chestnut brown

I CAN ENTER
NZ ON:

FIND ME:

- low tide
- sand and mud
- estuaries
- harbours
- coastal habitats



Photo credit:
Serena Cox, NIWA.



ASIAN PADDLE CRAB
– Auckland – Northland



IF YOU COME ACROSS ONE OF THESE:
CATCH IT! SNAP IT! REPORT IT!

0800 80 99 66

SPOTTED LANTERNFLY

Adult is up to 2.5cm long
and 1.2cm wide.

3 cm

0 cm

Grey
forewing with
black spots



Hind wings
have red
and black
patches

Yellow
abdomen
with black
bands

I CAN ENTER
NZ ON:

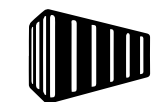


Photo credit:
Pennsylvania Department of Agriculture.



LANTERNFLY CAN TRAVEL FROM

- China
- India
- Vietnam
- Korea
- USA



IF YOU COME ACROSS ONE OF THESE:
CATCH IT! SNAP IT! REPORT IT!

0800 80 99 66

NUN MOTH



MALE
Feathery antennae



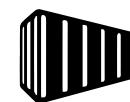
FEMALE
Hairy, stout body



Egg Mass

LOOK OUT FOR EGG MASSES ON:

Especially found on pine



0 cm

5 cm



NUN MOTH CAN TRAVEL FROM
– Europe



IF YOU COME ACROSS ONE OF THESE:
CATCH IT! SNAP IT! REPORT IT!

0800 80 99 66

WOOD-BORING BEETLES

Larvae and adult forms of beetles feed off and destroy all kinds of wooden materials

2 mm
|
0 mm

Exit holes in packing or pallet wood with associated frass



Many beetles are only around 2mm long



Some can impact forestry and structural wood in buildings and homes

Exit holes in wood, less than 1mm in diameter

I CAN ENTER NZ ON:



WOOD-BORING BEETLES CAN TRAVEL FROM
– All parts of the world



IF YOU COME ACROSS ONE OF THESE:
CATCH IT! SNAP IT! REPORT IT!
0800 80 99 66

INVASIVE ANTS



Red Imported
Fire Ant
3–6mm long

Reddish-
brown
in colour

Shiny
abdomen

Look out for
any unusual
ants

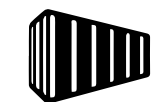
I CAN ENTER
NZ ON:



Yellow Crazy Ant
4–5mm long



Carpenter Ant
Up to 13mm long



INVASIVE ANTS

– Australia – North America – South America



IF YOU COME ACROSS ONE OF THESE:
CATCH IT! SNAP IT! REPORT IT!

0800 80 99 66

FALL ARMYWORM



Brown-grey forewings, cream hind wings

ADULTS

16-18mm long
38mm wingspan



Go brown-black as they mature

LARVAE

Light green to brown. Darker, bigger head

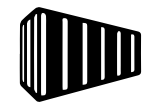
0 cm

3.4 cm

5 cm



I CAN ENTER NZ ON:



FALL ARMYWORM MOTH CAN TRAVEL FROM

- North America
- South America
- Australia
- Africa
- Asia



IF YOU COME ACROSS ONE OF THESE:
CATCH IT! SNAP IT! REPORT IT!

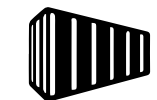
0800 80 99 66

GIANT AFRICAN SNAIL



You will recognise me by my size, I am huge... 10-20cm!

I CAN ENTER NZ ON:



GIANT AFRICAN SNAIL CAN TRAVEL FROM

- Pacific Islands
- Sri Lanka
- Mauritius
- South East Asia
- Brazil
- Seychelles
- China
- Caribbean
- Réunion Island
- India
- West Africa



IF YOU COME ACROSS ONE OF THESE:
CATCH IT! SNAP IT! REPORT IT!

0800 80 99 66

BIOSECURITY EXCELLENCE AT PORT OF TAURANGA

*Everyone who works in and
around the Port plays a part in
keeping unwanted pests and
diseases out of New Zealand.*

Pests and diseases from offshore can cause serious harm to New Zealand's unique environment and primary industries; and the Port of Tauranga is one of many ways in which they can enter.

That's why the Port of Tauranga is working with other key organisations to pursue 'biosecurity excellence at the Port' – an award winning initiative to lift biosecurity protection at the Port and its transitional facilities through a partnership approach between Port staff, associated industries and government.

This partnership explores opportunities to innovate and strengthen the current screening and inspection programmes at the Port of Tauranga and progresses initiatives to reduce biosecurity risks.

This calendar features 12 of our most unwanted pests that could potentially enter through the Port of Tauranga. Our best chance at keeping them out includes surveillance among people who know what to look for and can identify and report these pests, should they arrive.

Transitional facilities and associated industries such as transporters and other logistical organisations can provide vital assistance with this surveillance.

By working together, we can help protect New Zealand's environment and primary industries from unwanted biosecurity risks.



IF YOU COME ACROSS ANY OF THE PESTS FEATURED IN THIS CALENDAR:
CATCH IT! SNAP IT! REPORT IT! 0800 80 99 66



Biosecurity New Zealand
Ministry for Primary Industries
Manatū Ahu Matua

